



MapSource[®]

mapping software

user's manual

© Copyright 1999-2004 Garmin Ltd. or its subsidiaries

Garmin International, Inc.

1200 E. 151st Street, Olathe, Kansas 66062 U.S.A.

Tel. 913/397.8200 or 800/800.1020

Fax. 913/397.8282

Garmin (Europe) Ltd.

Unit 5, The Quadrangle, Abbey Park Industrial Estate, Romsey, SO51 9DL U.K.

Tel. 44/1794.519944

Fax. 44/1794.519222

Garmin Corporation

No. 68, Jangshu 2nd Road, Shijr, Taipei County, Taiwan

Tel. 886/2.2642.9199

Fax. 886/2.2642.9099

All rights reserved. Except as expressly provided herein, no part of this manual may be reproduced, copied, transmitted, disseminated, downloaded, or stored in any storage medium for any purpose without prior written consent of Garmin. Garmin hereby grants permission to download a single copy of this manual and of any revision to this manual onto a hard drive or other electronic storage medium to be viewed, and to print one copy of this manual or any revision hereto, provided that such electronic or printed copy of this manual must contain the complete text of this copyright notice and provided further that any unauthorized commercial distribution of this manual or any revision hereto is strictly prohibited.

Information in this document is subject to change without notice. Garmin reserves the right to change or improve its products and to make changes in the content without obligation to notify any person or organization of such changes or improvements. Visit the Garmin web site (www.garmin.com) for current updates and supplemental information concerning the use and operation of this and other Garmin products.

Garmin®, BlueChart®, City Select®, MapSource®, and MetroGuide® are registered trademarks of Garmin Ltd. or its subsidiaries, and may not be used without the express written permission of Garmin.

September 2004

Part Number 190-00417-00 Rev. B

Printed in Taiwan

Thank you for choosing Garmin MapSource®—the complete tool for managing your Garmin GPS unit. MapSource provides geographic data on a CD-ROM to view on your computer or add to the basemap of your GPS unit.

In this manual, you will learn how to view existing waypoints, routes, and tracks on a map by receiving information from your GPS unit. You will also learn to create new waypoints or routes with a click of the mouse and send them to your GPS unit. The manual is organized into six sections:

Introduction— contains important introductory material.

Getting Started— includes information about installing and unlocking your MapSource product and connecting your GPS unit to your PC.

User's Interface— describes MapSource menus, toolbars, and main features in detail.

Reference— gives step-by-step instructions so you can transfer maps and other data to and from your GPS unit and learn to create your own waypoints, routes, and tracks.

Appendix— contains keyboard shortcuts, map legends, and the Software License Agreement.

Index

Enjoy MapSource, and thank you again for choosing Garmin!

Product Registration

Help us better support you by completing our online registration today! Have the serial number of your MapSource software handy and connect to our Web site (<http://www.garmin.com>). Look for the Product Registration link on our Home page. Also, be sure to record your serial number in the right-hand column of this page.

Introduction

Registration and Support

Use this area to record the serial number (8-digit number located on the back of the box) in case your MapSource software is lost, stolen, or needs service. Be sure to keep your original sales receipt in a safe place or attach a photocopy inside the manual.

Serial Number:

--	--	--	--	--	--	--	--

Contact Garmin Customer Service

Should you encounter any difficulty while installing MapSource or if you have any questions about MapSource, contact Garmin's Product Support Department by phone at 800-800-1020, Monday – Friday, 8 am – 5 pm Central Time, or by e-mail at sales@garmin.com.

Introduction

Table of Contents

Introduction	i
Registration and Support.....	i
Warnings and Cautions.....	v
Getting Started	1
Installation Information	1
Minimum System Requirements.....	1
Garmin GPS Unit Compatibility.....	1
Data Transfer.....	2
MapSource Installation	3
Installing MapSource.....	3
Installing MapSource from a Setup CD.....	4
Installing MapSource from Data CDs (without a Setup CD) ..	6
Installation Notes.....	7
UnlockWizard	8
Unlocking Maps.....	8
Unlock Codes and Coupon Codes.....	8
Redeeming a Coupon Code.....	9
Using the UnlockWizard	9
Entering an Unlock Code with a 25-Character Code.....	10
Entering an Unlock Code with a Coupon Code.....	11
Backing up and Restoring Your Unlock Codes.....	12
Viewing your Installed Unlock Codes.....	14
Updating your Information with Garmin.....	15
Registering your Product	15
InstallShield Wizard	16
Using the InstallShield Wizard	16
Modifying Coverage Areas.....	16
Repairing MapSource	17
Removing MapSource.....	17
GPS Connections	18
Connecting Your GPS Unit to a Computer.....	18
Information about USB Drivers	18

User's Interface	19
MapSource Interface	19
Graphic Map and Status Bar	20
Graphic Map	20
Status Bar	20
Data Tabs	21
Data Tabs	21
Menus and Toolbars.....	22
File Menu.....	22
Edit Menu	23
Edit Menu: Preferences.....	24
Find Menu	28
Transfer Menu	29
View Menu	30
Tools Menu	32
Utilities Menu.....	33
Help Menu	34
Right-Click Menus	35
Right-Click Menus	35
Map Feature Right-Click Menu	35
Waypoint Right-Click Menu.....	37
Route Right-Click Menu.....	38
Track Right-Click Menu	40
Maps Tab List Right-Click Menu	41
Reference	42
Moving Around the Graphic Map.....	42
Selecting and Measuring on the Graphic Map.....	43
Map Sets.....	44
Adding, Removing, and Using Map Sets.....	44
Adding Maps from Multiple MapSource Products	45
Transferring MapSource Data.....	47
For BlueChart, Fishing Hot Spots, and LakeMaster Users.....	48

Introduction

Table of Contents

Introduction

Table of Contents

Pre-Loaded Map Data	48
Transferring Data from MapSource to a GPS Unit	49
Transferring Data from a GPS Unit to MapSource	52
Waypoints.....	54
Creating Waypoints	54
The Waypoint Properties Dialog Box	55
Editing Waypoints	56
Finding Places	57
Finding Places.....	57
Finding Places	57
Finding Nearest and Recently Found Places	61
Routes	62
Creating Routes	62
Using the Route Tool	62
Using Route Properties	65
The Route Properties Dialog Box	66
Tracks and Real-Time Tracking	69
Tracks and Real-Time Tracking	69
The GPS Tab	70
Viewing and Editing Track Properties	72
Filtering Tracks	74
Saving, Opening, and Printing in MapSource	75
Printing the Graphic Map	75
Importing Data	76
Importing .mps and Garmin PCX5 Data Files	76
Appendix A: Keyboard Shortcuts	77
Appendix B: Map Legends Lines and Areas	78
Appendix C: Software License Agreement	79
Index.....	81

Warnings and Cautions

Map Data Information: One of Garmin's goals is to provide customers with the most complete and accurate cartography that is available to us at a reasonable cost. We use a combination of governmental and private data sources which we identify as required in product literature and copyright messages displayed to the consumer. Virtually all data sources contain inaccurate or incomplete data to some degree. This is particularly true for areas outside the United States, where complete and accurate digital data is either not available or is prohibitively expensive.

If the data source lacks a feature, or if an item is mislocated or misidentified, it will be incorrectly identified or missing in the Garmin cartography product as well. Each MapSource product has its strengths and weaknesses, and not all are suitable for every purpose. Please keep this in mind as you use and enjoy the benefits the cartography provides.

Garmin encourages customers to report any errors found in our electronic maps by completing our online Error Reporting Form in the Cartography section of our web site at: <http://www.garmin.com/cartography/mapSource/errorForm.html>.

CAUTION: GARMIN MAKES NO WARRANTY AS TO THE ACCURACY OR COMPLETENESS OF THE MAP DATA IN THIS PRODUCT AND DISCLAIMS ANY AND ALL EXPRESS, IMPLIED, OR STATUTORY WARRANTIES, INCLUDING ANY IMPLIED WARRANTY OF MERCHANTABILITY OR FITNESS FOR A PARTICULAR PURPOSE. IT IS THE USER'S RESPONSIBILITY TO USE THIS PRODUCT PRUDENTLY. THIS PRODUCT IS INTENDED TO BE USED ONLY AS A TRAVEL AID AND MUST NOT BE USED FOR ANY PURPOSE REQUIRING PRECISE MEASUREMENT OF DIRECTION, DISTANCE, LOCATION, OR TOPOGRAPHY.

Introduction

Warnings and Cautions

BlueChart®

The following Warnings and Cautions may apply to some or all of the content in the MapSource BlueChart™ CD-ROM:

WARNING: No National Hydrographic Office has verified the information in this product and none accept liability for the accuracy of reproduction or any modifications made thereafter. No National Hydrographic Office warrants that this product satisfies national or international regulations regarding the use of the appropriate products for navigation.

WARNING: This product has been produced, in part or whole, from the United Kingdom Hydrographic Office products. No liability is accepted for the use of this product and it must not be used to assist in navigation. The digital chart(s) contained herein have not been verified or updated. For your safety, users are advised to consult official updated nautical charts for navigational purposes.

The Hydrographic Office has not verified the extracted data and the printed chart should be consulted for full navigational details.

CAUTION: The Australian Hydrographic Office does not check the information on this product and the Commonwealth accepts no liability for the accuracy of copying or for any modifications that may have been made to the information which it has supplied. Furthermore, the Commonwealth does not warrant that this product meets any regulations as an appropriate product for navigation or that it contains the latest hydrographic information available.

Installation Information

Minimum System Requirements

Your computer should meet the following minimum system requirements:

- IBM-compatible PC with Pentium processor or equivalent
- 16-32 Megabytes RAM, CD-ROM drive, mouse or other pointing device
- 256-color display adapter (24-bit color recommended) and monitor with 640 x 480 resolution or higher
- A minimum of 20 Megabytes to 1.5 Gigabytes of free hard drive space (depending on the map data)

MapSource requires a 32-bit operating system such as Windows 98/2000/ME/XP or Windows NT 4.0. When MapSource 6.0 is used on a computer with Windows NT 4.0, Internet Explorer 4.0 or higher is also required. You must have an available serial port or USB (Universal Serial Bus) port (if applicable) to interface with a Garmin GPS unit.

Use of the Garmin USB Data Card Programmer accessory requires Windows 98/2000, ME, or XP, and a USB Port.

Internet access is recommended for MapSource products that must be unlocked, such as City Navigator and City Select® products.

Garmin GPS Unit Compatibility

MapSource is compatible with most Garmin GPS units and systems. Refer to the Garmin Web site (<http://www.garmin.com>) for a complete list of MapSource products and their compatibility with Garmin GPS units.

Installation Information

Data Transfer

Data transfer and storage options vary with the type of Garmin GPS unit you own. MapSource data storage options include Garmin data cards (available for use with selected Garmin GPS systems), Compact Flash (CF) and Secure Digital (SD) cards, and your GPS unit's internal memory. Be aware that when you transfer MapSource data to a storage card, the card may overwrite old data with new data. See "Transferring Data," p. 47.



NOTE: For best results, wait until after MapSource is fully installed before connecting your GPS unit to your computer to ensure that the proper drivers are installed. Some products may have come with specific installation instructions. Follow those instructions for the proper time to connect your device to your computer.

Installing MapSource

The MapSource installation process varies, depending on the type of mapping product you purchase. For example, City Select and City Navigator require a Setup CD and two additional data CDs. Other products require one or two data CDs but no Setup CD. If your MapSource product includes a Setup CD, insert it into your computer first to begin installation. If your product does not contain a Setup CD (only one or two data CDs are included), insert Disc 1 into your computer and follow the installation instructions.

If your Garmin GPS unit came with specific installation instructions, follow those instructions. The following installation instructions are here to assist you if you need to reinstall MapSource. Please note that your specific installation may vary slightly from the installation instructions given in this guide. The basic configurations for a MapSource installation are as follows:

- **Setup CD with one or two accompanying Data CDs**— Refer to the section titled “Installing MapSource from a Setup CD,” p. 4, for instructions.
- **Two Data CDs (labeled Disk 1 and Disk 2 or similar)**— Refer to the section titled “Installing MapSource from Data CDs,” p. 6, for instructions.
- **One Data CD**— Refer to the section titled “Installing MapSource from Data CDs,” p. 6, for instructions.

MapSource Installation

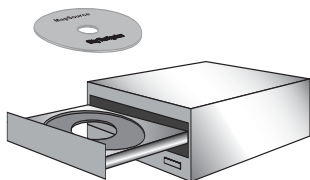


Setup CD Main Menu

Above is an example of the options that appear when the Setup CD runs on your computer. You may see different options, depending on what MapSource product you purchased.

Getting Started

MapSource Installation



Main Menu Screen

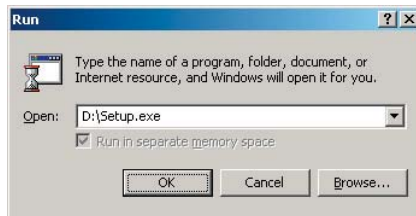
MapSource City Select Main Menu on the Setup CD shown

Installing MapSource from a Setup CD

Following are installation instructions for MapSource products that include a Setup CD. These products should also include two data CDs.

To install MapSource from the Setup CD:

1. Insert the MapSource Setup CD into your computer's CD-ROM or CD/DVD-ROM drive.
2. If auto-run is enabled, your computer should automatically run the startup file. If the startup file does not run automatically, click the **Start** button, select 'Run...', and type the drive letter of your CD-ROM drive followed by 'Setup.exe' (example: D:\Setup.exe). Press **Enter** or click **OK**.



Run Window

3. If you are prompted, select your language of choice. Then, from the **Main Menu** screen, click 'Install <Software name>' to begin the MapSource installation.

From the **Main Menu**, you can view the MapSource tutorial, which helps you learn about selecting and transferring detailed maps to your Garmin GPS unit. You can also visit the Garmin Web site and contact Garmin via e-mail. You may see different options, depending on your specific MapSource product.

4. The **InstallShield Wizard Welcome** screen opens. Follow the directions to continue installing the MapSource application.

Getting Started

- When prompted, remove the Setup CD from the CD-ROM drive. Insert the CD labeled Disk 1 (or something similar) into your CD-ROM drive.



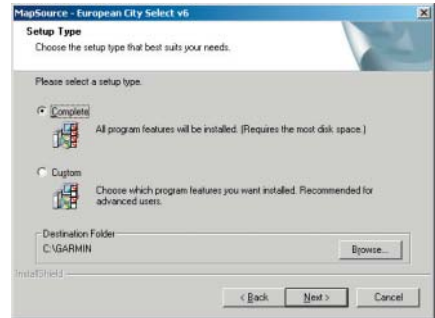
NOTE: Make sure the CD-ROM has stopped “spinning” before you remove the CD. You will notice that the drive is making less noise, indicating that it has stopped spinning (reading the CD). When you insert another CD, wait a few moments for the drive to start reading the CD before clicking **OK** to proceed.

- The **InstallShield Wizard** opens again. Follow the InstallShield Wizard instructions to finish installing detailed maps.
- If you see the **Setup Type** screen (shown in the top right image), select the type of setup to suit your needs. Select ‘Complete’ to install all regions. Select ‘Custom’ to customize your install and display the **Select Regional Coverage Areas** screen. Refer below for specific information about this screen. Click **Next** to continue.

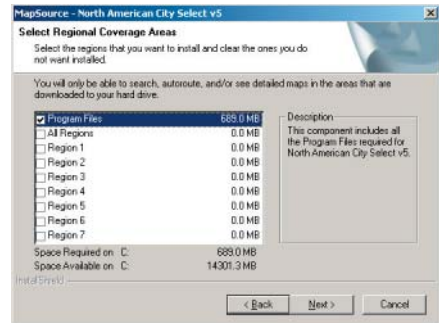
If you see the **Select Regional Coverage Areas** screen (shown in the bottom right image), select the region(s) that you wish to install to your computer’s hard drive. Unless you have limited space on your computer’s hard drive, select ‘All Regions.’ Otherwise, view the cities/states included in each region by highlighting the region and reading the description that appears. Keep the ‘Program Files’ box checked because these files are necessary in order to run MapSource on your computer. Click **Next** to continue.

- Continue following the directions to complete the installation. You will be prompted to insert Disk 2, then Disk 1 again.
- At the **InstallShield Wizard Complete** screen, click **Finish** to end the installation. If your MapSource product must be unlocked, the **UnlockWizard** opens at this time. Refer to the “UnlockWizard” section, p. 8.

MapSource Installation



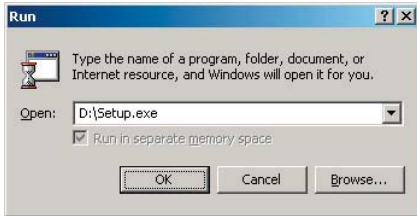
Setup Type Screen



Select Regional Coverage Areas Screen

Getting Started

MapSource Installation



Run Window



Setup Type Screen

Installing MapSource from Data CDs (without a Setup CD)

If your MapSource product does not include a Setup CD, follow the instructions below.

To install MapSource software without a Setup CD:

1. Insert the CD marked 'Disk 1.' If your product includes only one CD, insert it.
2. Your computer should automatically run the start-up file and display a Welcome screen. If it doesn't run automatically, click **Start** and select 'Run....' Type the drive letter of your CD-ROM drive followed by 'Setup.exe' (example: D:\Setup.exe). Press **Enter** or click **OK**.
3. If you are prompted, select your language of choice. Then, from the **Main Menu** screen, click 'Install <Software name>' to begin the MapSource installation.

From the **Main Menu**, you can view the MapSource tutorial, which helps you learn about selecting and transferring detailed maps to your GPS unit. You can also visit the Garmin Web site and contact Garmin via e-mail. You may see different options, depending on your specific MapSource product.

4. The **InstallShield Wizard Welcome** screen opens. Follow the directions to continue installing the MapSource application.
5. The InstallShield Wizard opens again. Follow the InstallShield Wizard to complete the detailed maps installation.
6. If you see the **Setup Type** screen (shown in the bottom left image), select the type of setup to suit your needs. Select 'Complete' to install all regions. Select 'Custom' to customize your install and display the **Select Regional Coverage Areas** screen. Refer below for specific information about this screen. Click **Next** to continue.

If you see the **Select Regional Coverage Areas** screen (shown in the image to the right), select the region(s) that you wish to install to your computer's hard drive. Unless you have limited space on your computer's hard drive, select 'All Regions.' Otherwise, view the cities/states included in each region by highlighting the region and reading the description that appears. Keep the 'Program Files' box checked because these files are necessary in order to run MapSource on your computer. Click **Next** to continue.

7. Continue following the directions to complete the installation. If prompted, insert Disk 2 and then Disk 1 again.



NOTE: Make sure the CD-ROM has stopped "spinning" before you remove the CD. You will notice that the drive is making less noise, indicating that it has stopped spinning (reading the CD). When you insert another CD, wait a few moments for the drive to start reading the CD before clicking **OK** to proceed.

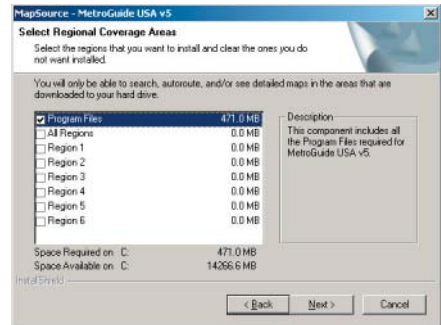
8. At the **InstallShield Wizard Complete** screen, click **Finish** to end the installation. If your MapSource product needs to be unlocked, the **UnlockWizard** opens at this time. Refer to the "UnlockWizard" section, p. 8.

Installation Notes

If you have previously installed other MapSource products on your hard drive and/or you do not have enough hard drive space to install the entire detailed map product database, try one of the following options:

- Select fewer coverage areas to download.
- Remove other programs from your hard drive.
- Completely remove (uninstall) all MapSource products and reinstall them to your hard drive. See p. 17.

MapSource Installation



Select Regional Coverage Areas Screen

Getting Started

UnlockWizard



MapSource products that require an Unlock Code carry this symbol on the outside of the box.



NOTE: Not all MapSource products need to be unlocked before they can be used. If your MapSource program does not have a 25-character **Unlock Code** or an 8-character **Coupon Code**, and you do not see the above symbol on the outside of the box, you **DO NOT** need to unlock the maps to view map detail.

Unlocking Maps

Some MapSource products must be “unlocked” before you can view and download the detailed map data. Those products come with either a 25-character **Unlock Code** or an 8-character **Coupon Code**.

If your MapSource product needs to be unlocked before you can use it, the **UnlockWizard** automatically runs at the end of the installation process. Follow the directions on your computer screen and use the Unlock Code or Coupon Code to unlock the map data and register your product.

If you did not unlock maps during installation, if you want to unlock another MapSource region, or if you want to unlock maps for a second Garmin GPS unit, you may do so using the **UnlockWizard** or the Garmin Web site, <http://www.garmin.com/unlock/>.

Unlock Codes and Coupon Codes

You need an Unlock Code or a Coupon Code to unlock your MapSource product (if the product requires you to unlock it). You will have either an Unlock Code or a Coupon Code in the packaging of your product.

An **Unlock Code** is a 25-character code that can unlock all maps associated with the MapSource product. The Unlock Code is printed on the bottom of a yellow piece of paper. You will also see the unit's serial number and a 7-character Registration Code.

A **Coupon Code** is an 8-character code that you can redeem to unlock a region. The Coupon Code is a printed sticker near the bottom of a tri-fold piece of paper called an **Unlock Certificate**.



NOTE: Keep your Unlock Code/Unlock Certificate in a safe place. You may need this information in the future if you need to re-install MapSource. Garmin cannot give refunds or exchanges for MapSource Unlock Codes.

Redeeming a Coupon Code

If you have an Unlock Certificate with an 8-character Coupon Code, use that code to obtain your Unlock Code either by following the directions on the Certificate or by using the **UnlockWizard**.

Using the UnlockWizard

If your MapSource mapping product needs to be unlocked, the **UnlockWizard** will automatically open so you can enter your Unlock Code or redeem your Coupon Code.

To open the **UnlockWizard** manually, open MapSource and press **Ctrl + U** on your keyboard. You can also click the **Start** button, select **Programs**, then select 'UnlockWizard' from the **MapSource** menu.

Follow the directions on your computer screen to enter a 25-character Unlock Code or to redeem an 8-character Coupon Code that will unlock the map data.

Once the map data is unlocked, the Unlock Code and coverage area information will appear in the **UnlockWizard**. You can access the **UnlockWizard** at any time through MapSource.

To open the UnlockWizard in MapSource:

1. Open MapSource.
2. Click **Utilities** and then 'Unlock Maps' or press **Ctrl + U**.

UnlockWizard



UnlockWizard Welcome Screen



NOTE: The **UnlockWizard** is not available in all MapSource products. If your MapSource product needs to be unlocked, it will have the **UnlockWizard**.

Getting Started

UnlockWizard



UnlockWizard Options



Enter 25-character Unlock Code

Entering an Unlock Code with a 25-Character Code

Your MapSource product packaging may contain a yellow piece of paper with a 25-character unlock code on it. If so, use this code to unlock your MapSource product using the following instructions.

To unlock your product with a 25-Character Unlock Code:

1. Open the **UnlockWizard** if it is not already open (see p. 9).
2. Click 'Yes, I have a 25-character unlock code.' Click **Next**.
3. Enter your 25-character unlock code and then a comment, if desired. Click **Next**.
4. If you would like to register your product, you can do so at this time by clicking 'Yes, I have a new Registration Code' and following the on-screen instructions. The Registration Code appears on the yellow piece of paper below the Unlock Code.

If you would like to register your product later, click 'No, I will register my product later' and click **Next**. You can now close the **UnlockWizard** and use MapSource.

Entering an Unlock Code with a Coupon Code

Your MapSource product may contain a tri-fold document, called an Unlock Certificate, that contains an 8-character Coupon Code. If so, use this code to unlock your MapSource product using the instructions that follow.



NOTE: You need to connect to the Internet to complete this procedure. During the procedure, the UnlockWizard will attempt to connect to the Internet if you are not already connected. Take proper steps to complete the connection, if necessary.

To unlock your product with a Coupon Code:

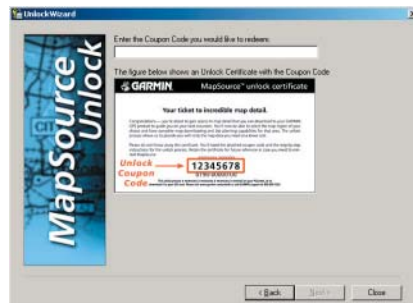
1. Open the **UnlockWizard** if it is not already open (see p. 9).
2. Click 'No, I need to get a 25-character unlock code.' Click **Next**.
3. Enter your personal information, such as name and address, in the fields provided and click **Next**.
4. Enter your Garmin Customer Code and click **Next**. If you do not have a Garmin Customer Code, follow the directions on the screen. Your registered Garmin products will appear in a dialog box. Click **Next**.
5. To redeem your Coupon Code, click 'I have an Unlock Certificate, I will type it in' and click **Next**.
6. To complete this screen you need either your GPS unit's internal Unit ID or Serial Number. To get the Unit ID, follow the appropriate steps in the **UnlockWizard**. To enter the unit's Serial Number, find the number on the back of the unit's casing and enter it in the space provided.
7. Enter the 8-character Coupon Code found on your Unlock Certificate. Click **Next**.
8. Select and verify the regions that you would like to unlock. After checking the box to agree to the terms, click **Next** to complete the unlock process. Your product is now unlocked.

Getting Started

UnlockWizard



UnlockWizard Options



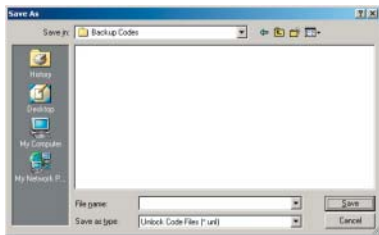
Enter Coupon Code

Getting Started

UnlockWizard



UnlockWizard Options



Windows 'Save As' dialog box

Backing up and Restoring Your Unlock Codes

Keep your Unlock Codes in a safe place by backing them up to a file and storing that file in a safe location. You can restore the Unlock Codes from the saved backup file.

To back up all Unlock Codes into a saved file:

1. Open the **UnlockWizard** if it is not already open (see p. 9).
2. Click 'Backup my unlock codes to a file.' Click **Next**.
3. In the **Save As** dialog box, select the folder where you want to store your unlock codes.



NOTE: We recommend that you keep the back up file in a separate location other than the MapSource folder.

4. Enter a file name for your unlock codes and click **Save**.
5. The **UnlockWizard** saves all of your unlock codes into that file for future use. Select 'Yes' to return to the **UnlockWizard** Options menu or select 'No, I am done' to exit the **UnlockWizard**.

Getting Started

UnlockWizard

To restore your Unlock Codes from a saved file:

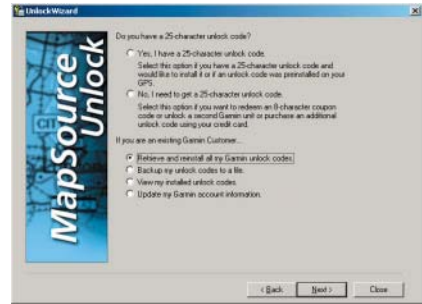
1. Open the **UnlockWizard** if it is not already open (see p. 9).
2. Click 'Retrieve and reinstall all my Garmin unlock codes.' Click **Next**.
3. If you have backed up your unlock codes to your PC using the steps described previously, select 'Retrieve my codes from a file on my PC.'
4. Browse for the file you saved your unlock codes in and click **Open**.
5. Your codes should now be restored to MapSource. Select 'Yes' to return to the **UnlockWizard** Options menu or select 'No, I am done' to exit the **UnlockWizard**.

To restore your Unlock Codes from the Garmin Server:



NOTE: You need to be connected to the Internet to complete this procedure. During the procedure, the **UnlockWizard** will attempt to connect to the Internet if you are not already connected. Take proper steps to complete the connection, if necessary.

1. Open the **UnlockWizard** if it is not already open (see p. 9).
2. Click 'Retrieve my unlock codes from the Garmin Server.' Click **Next**.
3. The products you have registered through the Garmin Web site using your Customer Code are listed. Click **Next**.
4. Your codes should be restored to MapSource. Select 'Yes' to return to the **UnlockWizard** Options menu or select 'No, I am done' to exit the **UnlockWizard**.



UnlockWizard Options



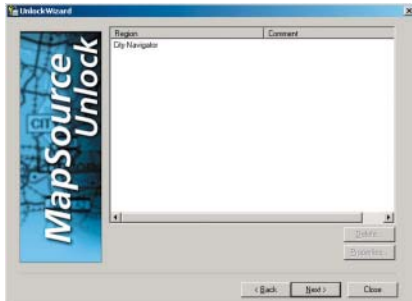
Retrieved Unlock Codes from Garmin Server

Getting Started

UnlockWizard



UnlockWizard Options



List of installed unlock codes

Viewing your Installed Unlock Codes

You can view your installed unlock codes at any time using the **UnlockWizard**.

To view your installed Unlock Codes:

1. Open the **UnlockWizard** if it is not already open (see p. 9).
2. Click 'View my installed unlock codes.' Click **Next**.
3. The **UnlockWizard** then displays a list of all of the unlock codes for your Garmin GPS units and mapping products.

To view the properties of a particular region or product, highlight the product and then click **Properties**.

To delete a particular region or product, highlight the product and click **Delete**.

Updating your Information with Garmin

You can update your personal information on file with Garmin at any time using your Garmin Customer code and the **UnlockWizard**.

To update your information with Garmin:

1. Connect to the Internet.
2. Open the **UnlockWizard** if it is not already open (see p. 9).
3. Enter your Garmin Customer Code. Click **Next**.
4. Review the products registered in your name and click **Next**.
5. The Garmin Web site opens in your browser. Review your personal information and make any adjustments as necessary. Click **Continue**.
6. Garmin updates your personal information.



NOTE: You need to be connected to the Internet to complete this procedure. During the procedure, the UnlockWizard will attempt to connect to the Internet if you are not already connected. Take proper steps to complete the connection, if necessary.

Registering your Product

After you have unlocked your MapSource product with the **UnlockWizard**, you can register it with Garmin. Follow the **UnlockWizard**'s directions to register your product. When prompted, enter the Registration Code that appears near the Unlock Code on the yellow sheet of paper that came with your product.



NOTE: You need to be connected to the Internet to register your product. During registration, the UnlockWizard will attempt to connect to the Internet if you are not already connected. Take proper steps to complete the connection, if necessary.

Getting Started

UnlockWizard



UnlockWizard Options



Enter your Registration Code

Getting Started

InstallShield Wizard



InstallShield Wizard
for North American City Select

Using the InstallShield Wizard

You can repair or remove the MapSource program with the **InstallShield Wizard** at any time. You can also modify the regional coverage areas of some MapSource products.

To access the InstallShield Wizard:

1. Click the **Start** button, **Settings**, and then 'Control Panel.'
2. From the Control Panel page, select 'Add/Remove Programs.'
3. Highlight 'MapSource' and click **Change/Remove**.
4. The **InstallShield Wizard** opens.

Some installations of MapSource may provide a link to the **InstallShield Wizard** in the **Start** menu. If you have this link, you can access the **InstallShield Wizard** using the following procedure.

1. Click the **Start** button.
2. Select **Programs**, then **MapSource**, then '<MapSource product> Installation Wizard.'

Modifying Coverage Areas

Some MapSource detailed map products allow you to modify the regional coverage areas. If your MapSource product allows this, 'Modify' appears in the **InstallShield Wizard** as an option.

To add or remove specific coverage areas:

1. From the **InstallShield Wizard** screen, select 'Modify,' and click **Next**.
2. On the **Regional Coverage Area Selection** page, check or uncheck the boxes next to the areas you want to add or remove and click **Next**.



NOTE: You *will need* your MapSource CDs to modify or repair MapSource.

InstallShield Wizard

Repairing MapSource

Use **InstallShield Wizard**'s 'Repair' option to duplicate the previous installation of the mapping product if it becomes corrupt. The **InstallShield Wizard** will step you through repairing your MapSource.



NOTE: *You will need your MapSource CDs to modify or repair MapSource.*

Removing MapSource

Use **InstallShield Wizard**'s 'Remove' option to remove the MapSource application from your system.

To remove the MapSource application from your system:

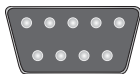
1. Open the **InstallShield Wizard** (see p. 16).
2. Select 'Remove.'
3. The **InstallShield Wizard** removes the MapSource application from your computer.



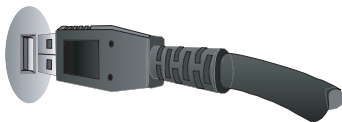
NOTE: *If more than one detailed map product is installed and you only wish to remove one product, open the **InstallShield Wizard** for the product you wish to remove.*

Getting Started

GPS Connections



Serial Communications Port



USB Data Port

Connecting Your GPS Unit to a Computer

You can connect your Garmin GPS unit to your computer using a DB-9 serial communications port or a USB data port. (Keep in mind that not all GPS units are USB-compatible.) If your GPS unit uses a USB, specific drivers are required (see “Information about USB Drivers” below for more information).

To connect your GPS unit to your computer:

1. When using a PC Interface Cable, connect your GPS to a serial communications port on your computer (see illustration at top left).
When using a USB Data Cable, connect your GPS to an available USB data port (see illustration at bottom left).
2. Make sure your GPS is turned on and the Serial Data Format is set to ‘Garmin,’ if possible.

To verify proper connection to the computer:

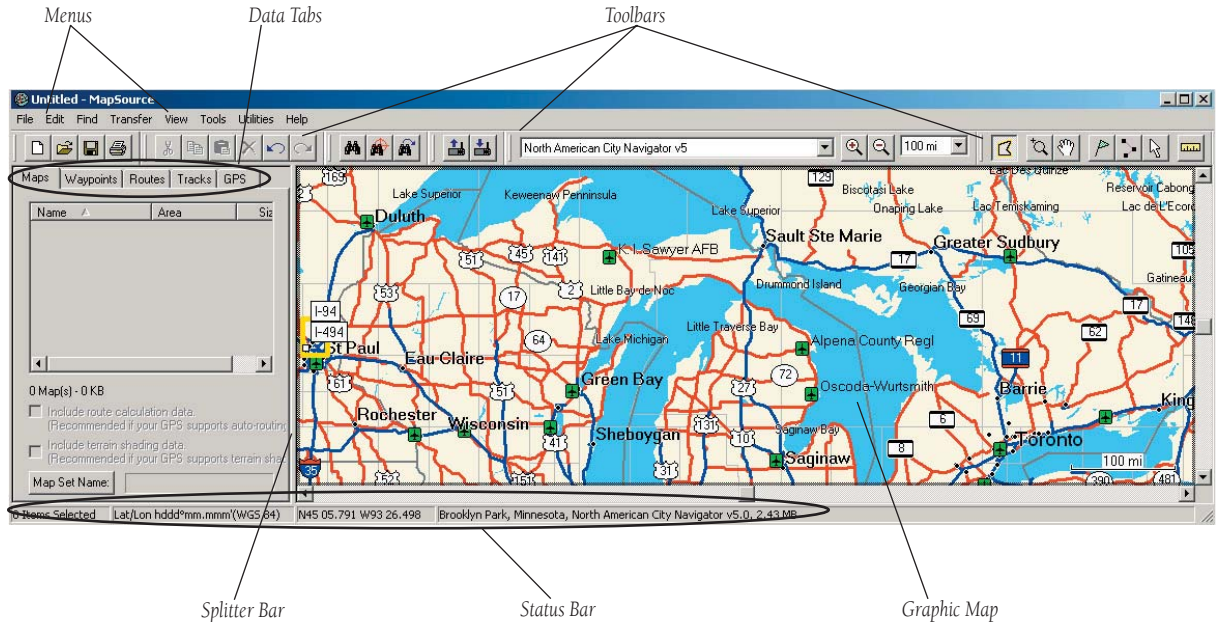
1. In MapSource, click **Utilities** and then ‘Get Unit ID.’
2. Make sure the name of your GPS unit appears in the ‘Device’ field. If not, your GPS unit may not be connected properly. Check the connection and then click **Find Device** if it does not appear.

Information about USB Drivers

The USB drivers should have been installed automatically when you installed the MapSource program. When you initially connect a USB GPS device to a USB port, your computer may prompt you to locate the destination of the drivers for the USB GPS. You only need to install the drivers once. After the drivers are installed, MapSource will always detect your USB GPS unit when you connect it to the computer.

User's Interface

MapSource Interface



Graphic Map and Status Bar

Graphic Map

The Graphic Map displays the “basemap” and any “detailed maps” you have installed. A basemap includes major roads and cities, whereas detailed maps show points of interest, addresses, and smaller streets and intersections. As you zoom in on the Graphic Map, you will see more detail. Look at the zoom level in the lower right-hand corner of the map. When you see the message ‘GPS Map Detail,’ you have zoomed in enough to view detailed maps. As you zoom out, you will see the basemap, which shows less detail. To learn how to move around the Graphic Map and zoom in and out, see “Moving Around the Graphic Map,” p. 42.

Status Bar

The Status Bar extends across the bottom of the MapSource window (see p. 19). The Status Bar may show the following information:

- The number of items highlighted in the list under any tab.
- The current Position Format and Map Datum for the map.
- The latitude and longitude of the mouse pointer on the map.
- The name and approximate data size of any map section you point to with your mouse on the Graphic Map (if you are using the Map tool).
- The distance and bearing from a beginning point to a place you point to with your mouse on the Graphic Map (if you are using the Distance/Bearing tool).

If you do not see the Status Bar, choose ‘Show Status Bar’ from the **View** menu.

Data Tabs

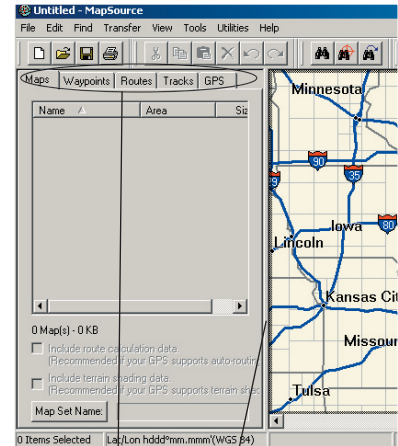
The Data tabs (Maps, Waypoints, Routes, Tracks, and GPS) are located on the left side of the MapSource window (see p. 19). When you select maps or create waypoints, routes, or tracks, you see that data listed under the appropriate data tab. For example, when you select maps to save to your GPS unit, these maps are listed under the Maps tab (see “Adding, Removing, and Using Map Sets,” p. 44, for instructions).

The data you see listed can be data you create in the Graphic Map or data you have transferred to MapSource from a GPS unit. You can easily view or edit items listed under each tab. You can also sort the data by column. Click a column header, such as ‘Name’ or ‘Area,’ to sort the data list by that column. An arrow appears showing the direction of the sort (ascending or descending). You can also change the order of the columns by clicking and holding a column header, then “dragging and dropping” the column to a different location.

You may need to move the Splitter Bar to see all the column headers. Click and hold the left mouse button on the bar and then drag it to the left or to the right.

User’s Interface

Data Tabs



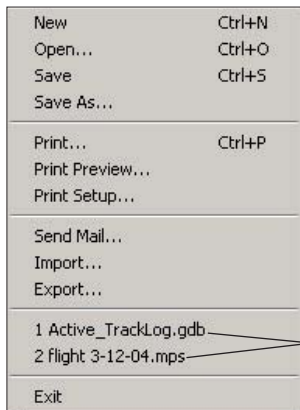
Data Tabs

Splitter Bar

User's Interface

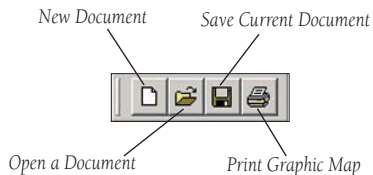
Menus and Toolbars

File Menu



Recent Files

File Toolbar



File Menu

New— Opens a new MapSource document with empty data tabs.

Open— Opens a previously saved MapSource document.

Save/Save As— Saves the current MapSource document.

Print— Prints the current Graphic Map display.

Print Preview— Shows a preview of what will be printed. To print the preview, click the **Print** button that appears on the preview page.

Print Setup— Opens the Setup page for printing the MapSource Graphic Map display.

Send Mail— Allows you to send an e-mail with the current MapSource document as an attachment. The recipient must own the same version of MapSource you are using or a newer version. Older versions of MapSource cannot open newer MapSource documents.

Import— Allows the user to open data stored using .mps format or Garmin PCX5 format. MapSource displays waypoints (.wpt), routes (.rte), tracks (.trk), or one of the maps (.grm) provided with PCX5.

Export— Allows the user to export MapSource data in tab-delimited text format (.txt for use in a word processor or spreadsheet), in .dxf format, or in .mps format.

Recent Files— Shows the four most recently opened MapSource documents. To reopen one of these files, click the document name.

Exit— Closes the MapSource application.

Edit Menu

Undo— Cancels the last action you took or command you gave.

Redo— Reactivates the last action you took or command you gave (available only after you have performed an Undo).

Cut, Copy, Paste— These functions work like many other Windows programs. You can cut or copy and paste any MapSource information listed in the data tabs from one MapSource document to another, or from MapSource to a word-processor, text editor, or spreadsheet in tab-delimited format.

Delete Item— Deletes waypoints, routes, tracks, or maps selected in the data tabs or on the Graphic Map.

Select All— Highlights all data in the active data tab and on the Graphic Map.

New Waypoint— Automatically creates a new waypoint in the center of the Graphic Map and displays the **Waypoint Properties** dialog box. Use this option to create and format a new waypoint. For more detailed information, see “Creating Waypoints,” p. 54.

New Route— Displays the **Route Properties** dialog box. Use this option if you want to find a place and then route to it. For more detailed information, see “Creating Routes,” p. 62.

Duplicate Route— Duplicates the route that is currently selected. The new, duplicated route will be saved as the old route name followed by a number, as in “Route 1.”

Remove Waypoint(s) from Route— Removes a selected waypoint from the selected route.

Properties— Opens the **Map, Route, Waypoint, or Track Properties** dialog box, depending on the data item that is selected.

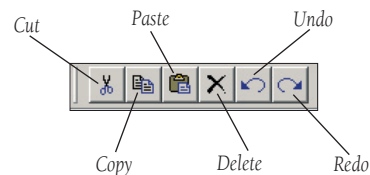
User's Interface

Menus and Toolbars

Edit Menu

Undo	Ctrl+Z
Redo	Ctrl+Y
<hr/>	
Cut	Ctrl+X
Copy	Ctrl+C
Paste	Ctrl+V
Delete Route	Del
<hr/>	
Select All	Ctrl+A
<hr/>	
New Waypoint...	Ctrl+W
New Route...	Ctrl+R
New Track...	Ctrl+Shift+T
Duplicate Route	
Remove Waypoint from Route	Ctrl+Del
Route Properties...	
<hr/>	
Preferences...	Ctrl+Shift+P

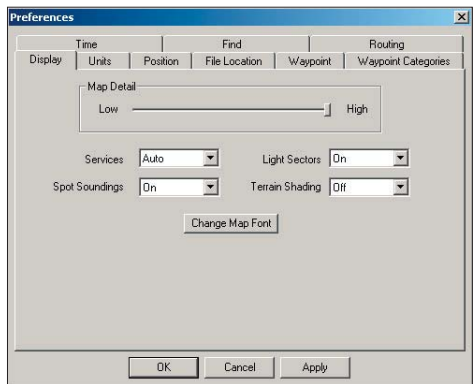
Edit Toolbar



User's Interface

Menus and Toolbars

Preferences Dialog Box



Edit Menu: Preferences

Use the **Preferences** dialog box to customize MapSource features and settings. When you change any settings, click **Apply** to see the changes take effect immediately or click **OK** to apply the changes and exit the **Preferences** dialog box.

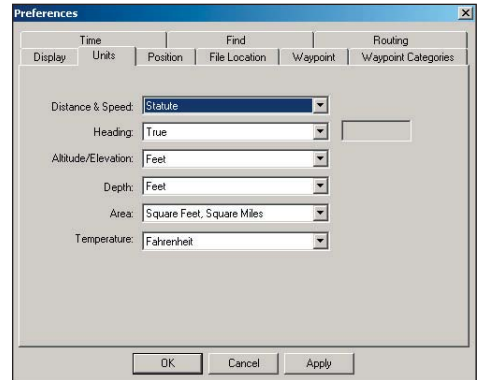


NOTE: *If you leave all preferences at their original settings, MapSource still functions correctly for general use.*

Display Tab: Use the slider bar to control the amount of map detail you want to display on the Graphic Map (this setting does not change the amount of map detail transferred to the GPS unit from your computer). The map may take longer to redraw if you select a high level of detail. Select 'High' when you have focused on a small area of the map and are ready to view lots of detail in that area. You can also choose options for displaying 'Services,' 'Spot Soundings' (for Blue Chart users), 'Light Sectors' (for Blue Chart users), and 'Terrain Shading,' on the Graphic Map. To change the font of the labels on the map, click **Change Map Font**.

Menus and Toolbars

Preferences: Units Tab



Units Tab:

Distance/Speed— Select Metric, Nautical, or Statute. All distance or speed measurements reflect this setting.

Heading— Choose one of the following:

- True—displays true North headings.
- Automatic Magnetic Variation—automatically calculates the magnetic variation for the geographical area.
- User—allows you to enter a magnetic variation.
- Grid—provides a true North heading as determined by the Position Format.
- Cardinal Direction—displays your heading and/or course as N (North), S (South), E (East), and W (West).

Altitude/Elevation— Select Feet or Meters.

Depth— Select Feet, Meters, or Fathoms.

Area— Select Acres, Hectares, Square Feet, Square Miles, or Square Meters, Square Kilometers.

Temperature— Select Celsius or Fahrenheit.

Position Tab: Select from the available default grid formats or manually enter information for a user-defined grid.



NOTE: *You should not need to change Position settings unless you are familiar with grid formats and map datums.*

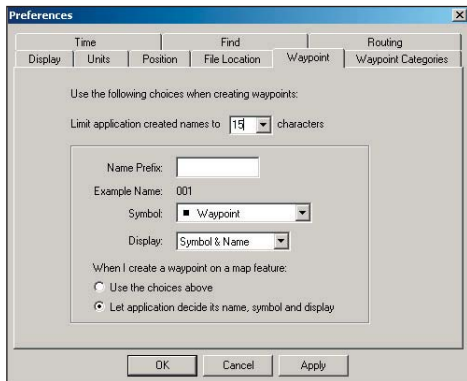
Grid— Select a grid format from the drop-down list.

Datum— Select from over 100 available map datums or manually enter information for a user-defined map datum.

User's Interface

Menus and Toolbars

Preferences: Waypoint Tab



File Location Tab: Sets up a default location on your computer for saving and opening your MapSource files and importing and exporting data. Manually enter the location or click 'Browse' to select the folder for your default file location.

Waypoint Tab: Sets up preferences for creating waypoints in MapSource.

Limit names to— Use the drop-down menu or manually enter a number to limit the number of characters in waypoint names.

When I Create a Waypoint on a Map Feature— If you want to use your own settings, enter your information for 'Name Prefix,' 'Symbol,' and 'Display,' and then check the 'Use the choices above' option. Otherwise, MapSource will use default settings.

Waypoint Categories Tab: A special feature that allows you to set up your own personal system for organizing saved waypoints in user-named categories. Enter the category names here; the Categories list appears when you create a new waypoint (see p. 56).

Time Tab: Sets up displayed time either by the computer's local time zone or by entering a Universal Time Conversion (UTC) offset.

Find Tab: Allows you to set the maximum number of places MapSource should find during a search and how many 'Recently Found' places you want MapSource to remember. You can also set the number of auto-complete suggestions you want to appear when you are searching (see p. 57).

User's Interface

Menus and Toolbars

Routing Tab: Sets up preferences for calculating routes. See “Routes,” p. 62 for more information.

Route Style— The original (default) setting is ‘Use Auto-Routing,’ which means MapSource will calculate turn-by-turn directions over roads to a location. Choose ‘Use Direct-Routing’ to calculate straight-line directions (no roads) if your GPS unit does not support Auto-Routing.



NOTE: *The additional options below apply to auto-routing users. If your Garmin GPS does not support auto-routing, you cannot change these options.*

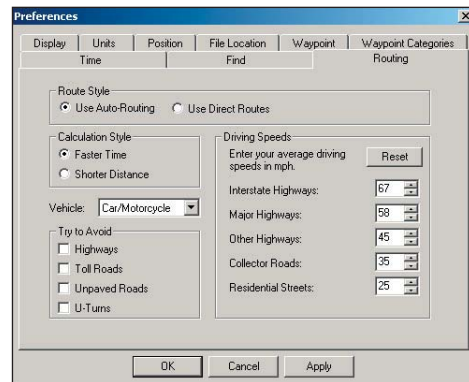
Calculation Style— Determines how MapSource calculates routes. Routes using ‘Faster Time’ are faster to drive but may be longer in distance. Routes using ‘Shorter Distance’ are shorter in distance but may take more time to drive.

Vehicle— Allows you to take advantage of MapSource’s built-in routing information to optimize routes for your vehicle type. For example, a street may be accessible by emergency vehicles only, or a residential street may not allow commercial traffic.

Try to Avoid— Allows you to avoid certain road types, such as highways, toll roads, unpaved roads, or U-turns. MapSource uses these road types only if alternative routes take you too far out of your way or if no other road is available.

Driving Speed— Allows you to enter your average driving speeds for use in calculating driving time. Click **Reset** to return to original settings.

Preferences: Routing Tab



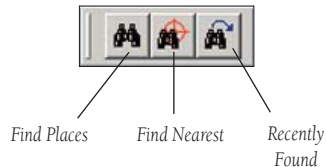
User's Interface

Menus and Toolbars

Find Menu

Find Places...	Ctrl+F
Find Nearest Places...	Ctrl+Shift+F
Recently Found Places...	

Find Toolbar



Find Menu

Find Places— Allows you to search for a city, feature (point of interest), address, street, intersection, or waypoint and view it on the Graphic Map. You may have fewer search options; the MapSource product you own determines what types of features you can search for. Keep in mind that **Find Places** only locates places within the regions included on your map.

Find Nearest Places— Allows you to find features near the center of the Graphic Map. If you right-click on any location, feature, or waypoint (including waypoints in the **Waypoints** tab list), you can search for features near that location on the map.

Recently Found Places— Allows you to view places you have searched for recently.

Transfer Menu

Send To Device— Allows you to transfer maps, waypoints, routes, and tracks to a GPS unit or storage card. See “Transferring MapSource Data,” p. 47, for more information.

Receive From Device— Allows you to transfer maps, waypoints, routes, and tracks from a GPS unit or a storage card to your computer. See “Transferring MapSource Data,” p. 47, for more information.



NOTE: *Garmin GPS units can store a limited number of maps, waypoints, routes, and tracks. Please refer to your GPS unit owner's manual or the Garmin Web site (<http://www.garmin.com>) to find out how much memory your GPS unit has to store this information.*



Receive From Device
Dialog Box



Send To Device
Dialog Box

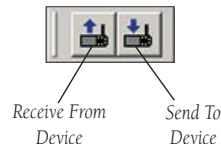
User's Interface

Menus and Toolbars

Transfer Menu



Transfer Toolbar



User's Interface

Menus and Toolbars

View Menu

Show Selected Map On Map	Ctrl+D
Go To Position...	Ctrl+T
Zoom In	+
Zoom Out	-
Zoom In Max	Ctrl +
Zoom Out Region	Ctrl -
Hide GPS Map Detail	Ctrl+G
Show Crosshair	Ctrl+H
Switch to Product	▶
Change Map Scale	▶
Show Toolbars	▶
Hide Status Bar	

View Toolbar



Zoom In

Zoom Out

Zoom Scale

View Menu

Show Selected Item on Map— Shows any highlighted item from the data tabs (a map, waypoint, route, or track) in the center of the Graphic Map. The menu heading changes according to context; for example, if you highlight a waypoint from the **Waypoints** tab, the menu will read 'Show Selected Waypoint on Map.'

Go To Position— Allows you to enter a latitude/longitude position to view on the Graphic Map.

Zoom In— Decreases the zoom scale, showing a smaller area in more detail. You can also press Plus (+) on your keyboard to zoom in.

Zoom Out— Increases the zoom scale, showing a larger area in less detail. You can also press Minus (-) on your keyboard to zoom out.

Zoom In Max— Decreases the zoom scale to the smallest setting, showing the most detail.

Zoom Out Region— Increases the zoom scale to center on the region that is currently selected.

Hide/Show GPS Map Detail— Hides or shows a fully detailed version of the Graphic Map, including all available map information. Unchecking this option enables faster map drawing.

Show Crosshair— Redraws the map display to show a crosshair in the center of the Graphic Map.

Switch Products— Allows you to select a MapSource product to display on the Graphic Map if you have purchased more than one from Garmin. You can choose from any MapSource products that you have installed on your computer and unlocked (if required). For some MapSource products, you may need to insert the product CD into your computer's CD-ROM drive. If so, a message will prompt you to insert the proper CD.



If you have more than one MapSource product installed, you will see the Select Product drop-down menu, which allows you to switch between MapSource products. If you have only one product installed, you will not see this menu.

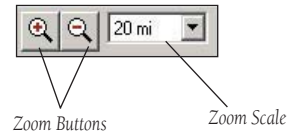
Change Map Scale— Allows you to select a zoom scale from a list. The options are the same as the Zoom Scale on the **View** Toolbar.

Show Toolbars— Allows you to choose which toolbars (**File**, **Edit**, **View**, **Transfer**, **Find**, and **Tools**) you want to display. A check mark next to the toolbar name means that toolbar will appear. You can also 'Hide All' or 'Show All' toolbars.

Hide/Show Status Bar— Allows you to hide or show the Status Bar at the bottom of the MapSource window. When this menu item is checked, you will see the Status Bar.

User's Interface

Menus and Toolbars



Using the Zoom Scale, you can zoom in to 80 feet and out to 1500 miles. Click the zoom buttons to zoom incrementally.

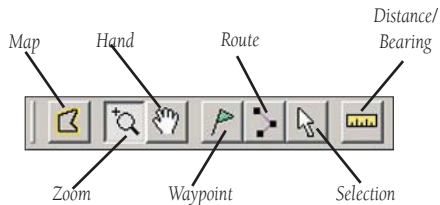
User's Interface

Menus and Toolbars

Tools Menu

Map	m
✓ Zoom	z
Hand	h
<hr/>	
Waypoint	w
Route	r
Selection	s
<hr/>	
Distance/Bearing	d

Tools Toolbar



Tools Menu

Map Tool— Allows you to add or remove maps from a Map Set. See “Map Sets,” p. 44, for more information.

Zoom Tool— Allows you to zoom quickly to a specific area on the Graphic Map.

Hand Tool— Allows you to pan or move around the Graphic Map.

Selection Tool— Allows you to select map features, waypoints, routes, and tracks directly on the Graphic Map.

Waypoint Tool— Allows you to create waypoints on the Graphic Map. See “Waypoints,” p. 54, for more information about creating waypoints with the **Waypoint** tool.

Route Tool— Allows you to create a new route on the Graphic Map by using existing waypoints or creating new waypoints. See “Routes,” p. 62, for information about creating routes with the **Route** tool.

Distance/Bearing Tool— Allows you to measure the distance and bearing from one point to another on the Graphic Map.

Tools Keyboard Shortcuts

You can select and switch between tools by using keyboard shortcuts. With the Graphic Map selected, press the appropriate key on your keyboard to switch tools:

Zoom— z

Hand— h

Selection— s

Waypoint— w

Route— r

Map— m

Distance/Bearing— d

Utilities Menu

Unlock Maps— Opens the **UnlockWizard** so that you can unlock map data if your software requires an unlock code. Use this menu option if you chose not to unlock maps during installation, if you want to unlock another MapSource region, or if you want to unlock maps for a second Garmin GPS unit. See “Unlocking Maps,” p. 8, for more information.

Get Unit ID— Retrieves the Unit ID of your GPS unit. Connect your GPS unit to an available serial port or USB port on your computer. Make sure the name of your GPS unit appears in the ‘Device’ field. If not, click **Find Device**. Then click **OK** to get the Unit ID. If your GPS unit does not appear in the ‘Device’ field, check to make sure that it is connected securely to your computer and that it is turned on.

Erase Garmin Storage Card— This option is only visible if you have a Garmin Data Card Programmer installed and connected to your PC. Select this option to completely erase the contents of your Garmin data card. Data card contents cannot be recovered if erased.

Rename GPS— Allows you to give a new name to GPS units that connect to your computer via USB port and some that connect via serial port. This option is helpful if you connect more than one GPS unit to your computer because it allows you to differentiate between GPS units when you are receiving or sending information.

Set PC Clock— Allows you to synchronize the clock on your PC with the clock on your GPS unit. Connect your GPS unit to a serial or USB port on your computer. Make sure the name of your GPS unit appears in the ‘Device’ field. If not, click **Find Device**. Then click **OK** to set the PC Clock.

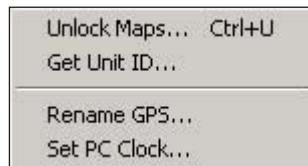


NOTE: Not all Garmin GPS units may be used to set your PC clock.

User's Interface

Menus and Toolbars

Utilities Menu



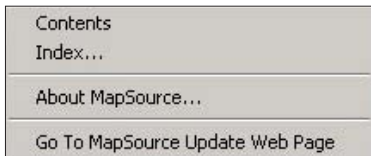
Set PC Clock



User's Interface

Menus and Toolbars

Help Menu



Help Menu

Contents— Displays the Help **Contents** tab.

Index— Displays the Help **Index** tab.

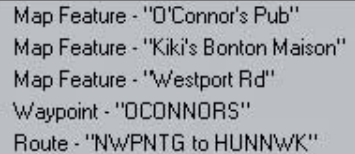
About MapSource— Displays information about the MapSource application, including software version, USB driver versions, and a list of installed products.

Go To MapSource Update Web Page— Opens the MapSource Updates and Downloads page of the Garmin web site so you can check for the latest available version of MapSource software to download. To update MapSource, click 'Download' and follow the directions on your computer screen.



NOTE: *MapSource is the operating software for all of our software products (such as BlueChart or City Select). Installing a newer version of MapSource will not update your map data.*

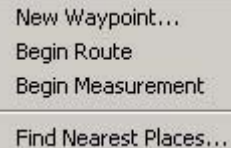
Right-Click Menu



```
Map Feature - "O'Connor's Pub"
Map Feature - "Kiki's Bonton Maison"
Map Feature - "Westport Rd"
Waypoint - "OCONNORS"
Route - "NWPNTG to HUNNWK"
```

When you click the right mouse button on a location that has multiple features, the first menu shows a list of all those items. Select one of these items and the appropriate right-click menu will appear.

Right-Click Menu



```
New Waypoint...
Begin Route
Begin Measurement
Find Nearest Places...
```

Right-Click Menus

MapSource includes shortcuts to many functions of the main menus through right-click menus. To access a right-click menu with any tool (except the Zoom tool), click the right button on your mouse anywhere on the Graphic Map, and a menu of options appears for that feature or location. Right-click on an item in one of the data tabs to open a menu for that item.

If you right-click on a part of the map where there is more than one feature (such as a waypoint that is part of a route), you see a list of all the features at that location. Click a feature in the list to show the appropriate right-click menu.




NOTE: *The 'New Waypoint,' 'Begin Route,' 'Begin Measurement,' and 'Find Nearest Places' options are default right-click options. You can access them by clicking the right mouse button anywhere on the Graphic Map.*

Map Feature Right-Click Menu

If you right-click on an open area or a feature of the Graphic Map (such as a Point of Interest, Exit, Fishing Area, or Navigational Aid—not a route, waypoint, or track), you may see the following menu options:

New Waypoint— Creates a new waypoint at that location and opens the **Waypoint Properties** dialog box.

Begin Route— Activates the **Route** tool  and starts a route at that location.

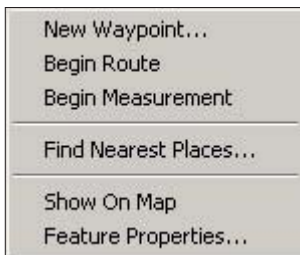
Begin Measurement— Activates the **Distance/Bearing** tool , which allows you to measure the distance and bearing from the location you selected to another location on the Graphic Map.

Find Nearest Places— locates features nearest that point.

User's Interface

Right-Click Menus

Map Feature Right-Click Menu



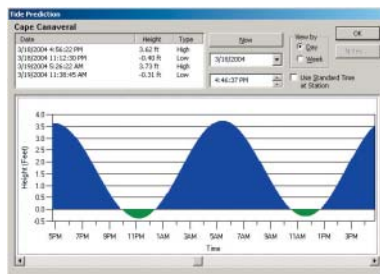
Show on Map— Shows the selected map feature in the center of the Graphic Map.

Feature Properties— Activates the **Properties** information box for the selected map feature. The box may contain the address and phone number of a point of interest, US Interstate Exit Service information, Fishing Hot Spot or Lake information, or details about a Marine Chart.

Predict Tides— If your MapSource product supports this feature, click the **Selection** tool, right-click the Tide Station, select the Tide Station Name from the menu, then select 'Feature Properties.' In the **Tide Prediction** dialog box, you can also view the tide information for a different time or date, view the information either by day or by week, and view information using the local station time.

Show This Map Only/Show All Maps— This feature applies to BlueChart regions of MapSource, where map areas frequently overlap. With the Map tool selected and a map area highlighted in yellow, right-click the map area to access this additional option. Select 'Show This Map Only' to view detail only within the selected map. To cancel, right-click the map area again and select 'Show All Maps.'

Tide Prediction Dialog Box



Waypoint Right-Click Menu

If you right-click on a waypoint listed in the **Waypoints** tab or on the Graphic Map, you may see the following options:

Move Waypoint— Activates the **Selection** tool and allows you to move the waypoint to another location on the Graphic Map.

New Waypoint— Creates a new waypoint at that location.

Begin Route— Starts a new route at that location.

Begin Measurement— Starts a new measurement from that waypoint.

Find Nearest Places— Locates features near that waypoint.

Remove Waypoint From Route— Removes the selected waypoint from a route but does not delete the waypoint (this option is enabled only if the selected waypoint is part of a route).

Cut/Copy— Just like the functions in the **Edit** menu, these options allow you to cut and copy waypoints from one active MapSource document to another.

Delete Waypoint— Deletes the selected waypoint.

Show Selected Waypoint on Map— Shows the selected waypoint in the center of the Graphic Map.

Waypoint Properties— Opens the **Waypoint Properties** dialog box, which allows you to review and edit properties of the selected waypoint.

User's Interface

Right-Click Menus

Waypoint Right-Click Menu

Move Waypoint
New Waypoint...
Begin Route
Begin Measurement
Find Nearest Places...
Remove Waypoint from Route
Cut
Copy
Delete Waypoint
Show Selected Waypoint On Map
Waypoint Properties...

User's Interface

Right-Click Menus

Route Right-Click Menu Options

Insert Route Section
Duplicate Route
Invert Route
Recalculate Route
New Waypoint...
Begin Route
Begin Measurement
Find Nearest Places...
Cut
Copy
Delete Route
Show Selected Route On Map
Route Properties...

Route Right-Click Menu

If you right-click on a route listed in the **Routes** tab or on the Graphic Map, you may see the following options:

Insert Route Section— This option appears when you select a route and then right-click a leg of that route (between two waypoints). It allows you to insert a new point in that leg of the route.

Extend Route— This option appears when you right-click the start point or end point of a route. It allows you to extend the route to include an existing waypoint or map location.

Replace Route Section— This option appears when you select a route with at least three waypoints and right-click one of the waypoints. It allows you to move the waypoint to a new location.

Duplicate Route— Creates and saves a duplicate route in the **Routes** tab. The new route will be saved as the old route name followed by a number, as in "Route 1."

Invert Route— Reverses the waypoint order so that the last waypoint in the route becomes the first, and so on. This command also reverses the route name if the route name is the Autoname default '<begin point> to <end point>.'

Recalculate Route— Recalculates the selected route and includes any changes; for example, if you have modified the auto-routing preferences, the new route will reflect those changes. Use this option to create an auto-route from a direct route (a route created with a non-routable MapSource product).

New Waypoint— Creates a new waypoint at that location.

Begin Route— Starts a new route at that location.

Begin Measurement— Starts a new measurement from that waypoint.

Find Nearest Places— Locates features near that waypoint.

Cut/Copy— Just like the functions in the **Edit** menu, these options allow you to cut and copy routes from one active MapSource document to another.

Delete Route— Deletes the selected route.

Show Selected Route on Map— Shows the selected route in the center of the Graphic Map.

Route Properties— Opens the **Route Properties** dialog box, which allows you to review and edit properties of the selected route.

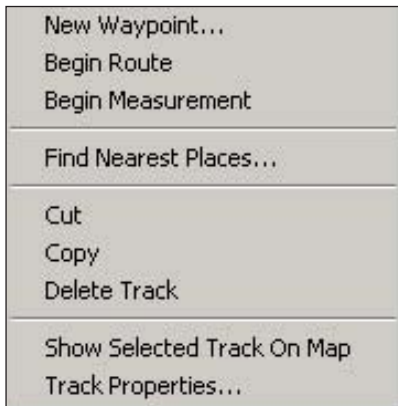
User's Interface

Right-Click Menus

User's Interface

Right-Click Menus

Track Right-Click Menu



Track Right-Click Menu

If you right-click on a track listed in the **Tracks** tab or on the Graphic Map, you may see the following options:

New Waypoint— Creates a new waypoint at that location.

Begin Route— Starts a new route at that location.

Begin Measurement— Starts a new measurement from that waypoint.

Find Nearest Places— Locates features near that waypoint.

Cut/Copy— Just like the functions in the **Edit** menu, these options let you cut and copy tracks from one active MapSource document to another.

Delete Track— Deletes the selected track.

Show Selected Track on Map— Zooms to the selected track and centers it on the Graphic Map.

Track Properties— Opens the **Track Properties** dialog box, which allows you to review and edit properties of the selected track.

Maps Tab List Right-Click Menu

If you right-click on a map name listed in the **Maps** tab, you may see the following options:

Cut/Copy/Paste— Just like the functions in the **Edit** menu, these options let you cut, copy, and paste maps from one active MapSource document to another.

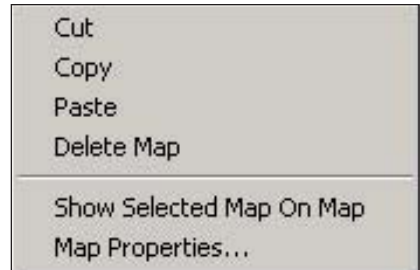
Delete Map— Deletes the selected map from the **Maps** tab list.

Show Selected Map on Map— Shows the selected map in the center of the Graphic Map.

Map Properties— Opens the **Map Properties** information box, which shows the name, type of coverage area, and size of the map.

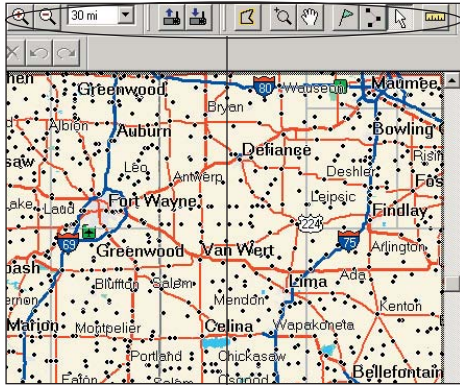
Right-Click Menus

Maps Tab List Right-Click Menu



Reference


Moving Around the Graphic Map






Use these tools to move around the Graphic Map.

Moving Around the Graphic Map

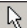
Before you can use MapSource effectively, you must first learn how to move around the Graphic Map. Use any of the following methods to pan and zoom:


- Select the **Hand** tool  from the **View** toolbar. Press and hold the left mouse button on the Graphic Map and move the mouse in the direction you want to move the map. To center on a point on the map, click while pressing **Ctrl**.
- Use the scroll bars on the right-hand side and at the bottom of the map.
- Use the **Up**, **Down**, **Left**, and **Right** arrow keys on the keyboard. Hold the **Ctrl** button down while pressing a directional key to move a full screen in length.

To zoom in and out on the Graphic Map, you can do the following:


- Click **Zoom In**  or **Zoom Out**  on the **View** toolbar.
- Select 'Zoom In' or 'Zoom Out' from the **View** menu.
- Select the **Zoom** tool  from the **Tools** menu or press **z** on your keyboard. Click the left mouse button once on the map to zoom in and right click once to zoom out. If you want to zoom in on a particular area, click and hold the left mouse button and drag the mouse to draw a box around the area.
- Use the **Zoom Scale** menu on the **View** toolbar to zoom straight to a particular level.
- Press the Plus (+) or Minus (-) keys on your keyboard. The Plus key zooms in and the Minus key zooms out.

Selecting and Measuring on the Graphic Map

You may need to select a waypoint, route, or track on the Graphic Map to edit or modify it. To select anything on the Graphic Map, use the **Selection** tool  and click the item you want to select. Selected items on the map are highlighted in some way. For example, selected routes are highlighted in yellow.

You may also need to measure the distance in a straight line from one point to another or the area between several points on the map. To measure distance and bearing, use the **Distance/Bearing** tool . You can also begin measuring by right-clicking on the Graphic Map with any tool (except zoom) and selecting 'Begin Measurement.'

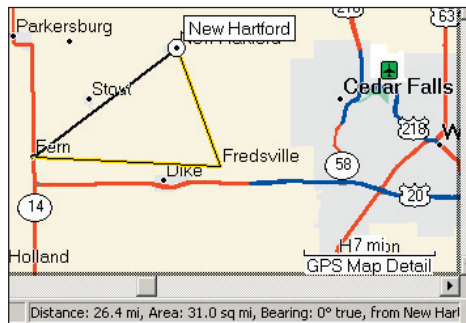
To determine a distance and bearing or measure an area:

1. Click the **Distance/Bearing** tool .
2. Place your mouse at a point on the Graphic Map where you want to begin measuring and click the left mouse button.
3. Move your mouse to the point where you want to stop measuring and click the left mouse button. You can see the distance and bearing from the beginning point to the ending point displayed in the Status Bar.
4. Move your mouse to other end points if you want to continue measuring. When you select two or more points, you will see the area encompassed by those points in the Status Bar. When you are finished, click the right mouse button or press **Esc** on your keyboard.

Reference

Moving Around the Graphic Map

Measuring a Distance and Bearing



In the Status Bar, you can see the total distance between the three cities and the area between them.

Reference

Map Sets



A Map Set appears as a list of area maps in the **Maps** tab.

Adding, Removing, and Using Map Sets

A Map Set is one or more detailed area maps that you have selected from the Graphic Map and want to save to your Garmin GPS unit. The detailed areas are determined by the MapSource product you have installed.

The names of all area maps in a Map Set appear in a list under the **Maps** tab. You can view the name of the map, what MapSource program it came from, and how much memory you need in your GPS unit to save the map. You can also view this information by right-clicking on a map name and choosing 'Map Properties.'

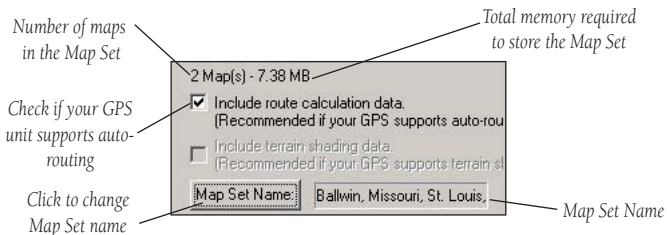
At the bottom of the **Maps** tab, you will see the number of maps in the Map Set and how much total memory you need in your GPS unit to store the Map Set. You can choose to include auto-routing data or terrain shading data if your GPS unit supports these functions. To include this data, check the boxes at the bottom of the **Maps** tab.



NOTE: You can view a MapSource Tutorial on the MapSource setup CD to learn how to select maps and download them to your GPS unit.



NOTE: Not all Garmin GPS units can use detailed maps. Check your GPS unit owner's manual to see if your unit is compatible.



Adding Maps from Multiple MapSource Products


You can add maps from more than one MapSource product to a Map Set, but you will only see data from one product on your GPS unit if the maps overlap. The maps are not transparent on the unit and cannot be combined. If two maps from different MapSource products overlap on your GPS unit, you need to turn the overlapping map off in order to see the other map underneath. Check your GPS unit owner's manual to learn how to turn MapSource maps on or off.

For example, if you select both Topographical and Roads & Recreational data for the same geographical area, you WILL NOT see a combination of topographic and road data. You will only see data from the Roads & Recreation data set. In order to see the Topographical data, turn the Roads & Recreational data off in your GPS unit.



NOTE: You must unlock your MapSource product (if necessary) to add maps to a Map Set. See "Unlocking Maps," p. 8, for more information.

To add maps to a Map Set:

1. Zoom to 30 miles (50 km) on the zoom scale.
2. Click the **Map** tool  or choose 'Map' from the **Tools** menu. When you place the mouse over the map, you will see area maps outlined in yellow. The name and size of the map appear in the Status Bar.
3. Click the left mouse button to add the map to the Map Set. To select several area maps at once, click and drag the mouse over the areas you want to select. Each selected map will be highlighted in pink.

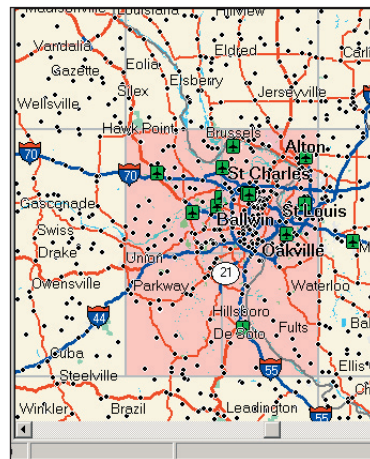


NOTE: Some MapSource products sell area maps separately. You can only select maps that you have purchased and installed on your computer.

Reference

Map Sets

Adding Maps to a Map Set



Maps added to a Map set appear outlined in pink.



NOTE to BlueChart Users: Once maps are selected they are outlined in pink rather than shaded.

Map Sets

To remove a map from the Map Set:

1. Click the **Map** tool  and place the mouse inside the border of the area map you want to remove.
2. Click the left mouse button. To remove several maps at once, hold the **Ctrl** key and then click and drag the mouse to draw a box through highlighted areas on the Graphic Map.

OR:

1. Highlight the area map you want to remove in the **Maps** tab list. To select several maps, hold down the **Shift** key on your keyboard and click the desired maps.
2. Click the right mouse button and select 'Delete Map,' press the **Delete** key on your keyboard, or select 'Delete Map' from the **Edit** menu.

To rename a Map Set:

1. Click **Map Set Name** at the bottom of the **Maps** tab.
2. Enter a new name in the 'Name' field and click **OK**.

Transferring MapSource Data

You can transfer Map Sets, waypoints, routes, and tracks to a GPS unit or storage card from the MapSource program, or from a GPS unit or storage card to the MapSource program. You can transfer data in a variety of ways, depending on what GPS unit you have. Always check your GPS unit owner's manual to see what data transfer options are available.

You may use one of the following methods to transfer data to or from your GPS unit:

- Serial or USB Cable— With this method, you can transfer maps, waypoints, routes, and tracks to and from your GPS unit.
- USB Data Card Programmer— If your GPS unit uses a Garmin data card (not pre-programmed), you can use this proprietary data card programmer to transfer maps, waypoints, routes, and tracks. However, not all Garmin GPS units can read waypoints, routes, and tracks that have been transferred to the data card (maps can always be read).

Each time you transfer maps or other data to your data card, you will completely erase all data currently stored on the card and replace it with new data. The only exception is this: if you store maps on a data card and you transfer waypoints, routes, or tracks, you will not erase the maps on the card. You may be able to save waypoints, routes, and tracks from a data card to your GPS unit's internal memory. That way, if you load new data on your data card, you will still have the old data stored in your GPS unit. You cannot save maps from a data card to your GPS unit's internal memory!



NOTE: The USB Data Card Programmer operates only with Windows 98, Windows 2000, Windows ME, or Windows XP.

Reference

Transferring MapSource Data

The Transfer Toolbar



Receive From Device Tool

Send To Device Tool

Reference

Transferring MapSource Data

- Compact Flash (CF) or Secure Digital (SD) Card Reader— If your GPS unit uses a CF or SD card, you can purchase a card reader from a third party to transfer data. You can only transfer maps to and from a CF or SD card. No other data types can be transferred.
- iQue users— To transfer data to and from an iQue, you must synchronize (perform a HotSync®). You can send maps to your iQue and receive tracks with Track Conduit, which you can download from <http://www.garmin.com>. See p. 51 and 53 for more information on transferring data to and from an iQue.
- cf Que users— You can transfer maps, waypoints, routes, and tracks to and from your cf Que. If your cf Que does not automatically synchronize (perform an ActiveSync®) when connected to your computer, you may need to synchronize after transferring data.

For BlueChart, Fishing Hot Spots, and LakeMaster Users

Pre-programmed BlueChart, Fishing HotSpots, and LakeMaster data cards should not be used in the USB Programmer or in a GPS unit for saving MapSource maps—you will lose the pre-loaded data! Make sure you remove this pre-programmed data card from your GPS unit before you transfer maps. MapSource will warn you if you are in danger of erasing data. If you overwrite the pre-loaded data, Garmin will not replace or recover it.

Pre-Loaded Map Data

If your GPS unit includes a pre-loaded/pre-programmed Points of Interest (POI) database, you will see a warning about erasing this pre-loaded data before you save MapSource maps. (This warning does not refer to the basemap of your unit.) The pre-loaded data can be restored to your GPS unit by downloading it from the Garmin web site.

To reload Points of Interest:

1. Go to <http://www.garmin.com>.
2. Click 'Software Updates' on the left side of the page.
3. Click the name of your GPS unit.
4. Click to accept the terms of the Software License Agreement.
5. Click the 'Download' link located under 'Download Preloaded Marine POI Database.'

Any MapSource maps on your GPS unit will be erased and replaced with the POI database.


Transferring Data from MapSource to a GPS Unit

If your GPS unit has a storage card, be sure the card is inserted correctly into the unit. Also, make sure your GPS unit is connected to your computer. Set your unit's Data Transfer mode to 'Garmin' if applicable. See your GPS unit owner's manual for further instructions. Then follow the instructions below that correspond to your GPS unit.



NOTE: MapSource transfers all of the data listed in a data tab to your GPS unit each time you transfer data.

To send data to a serial GPS unit:

1. Click  or choose 'Send To Device' from the **Transfer** menu.
2. The name of your GPS unit should automatically appear in the 'Device' drop-down menu. If not, click **Find Device**.
3. Under 'What to Send,' check the boxes next to each type of data you want to send.
4. Click **Send**. MapSource will begin sending data to your GPS unit. After you begin transferring data, you can check the box next to 'Turn Off GPS After Transfer' if you wish.

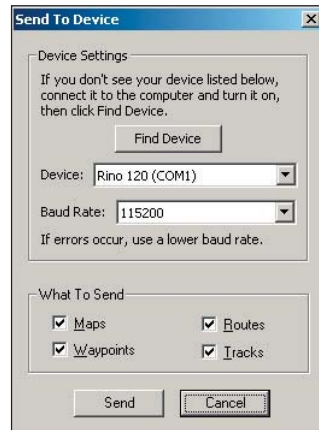
Reference

Transferring MapSource Data

The Send To Device Icon



Sending Data to a Serial GPS Unit



Reference

Transferring MapSource Data


Sending Data to a USB GPS Unit




Sending Maps to a CF or SD Card Reader




To send data to a USB GPS unit:

1. Click  or choose 'Send To Device' from the **Transfer** menu.
2. The name of your GPS unit should automatically appear in the 'Device' drop-down menu. If not, click **Find Device**. If you are using a cf Que, select where you want to save data under the 'Map Storage Location' field.
3. Under 'What to Send,' check the boxes next to each type of data you want to send.
4. Click **Send**. MapSource will begin sending data to your GPS unit. You can check the box next to 'Turn Off GPS After Transfer' if available.

To send data to a USB Card Programmer:

1. Click  or choose 'Send To Device' from the **Transfer** menu.
2. You should see 'USB Data Card Programmer' in the 'Device' field. If not, click **Find Device**.
3. Under 'What to Send,' check the boxes next to each type of data you want to send.
4. Click **Send**. MapSource will begin sending data to your data card.

To send maps to a CF or SD card reader:


1. Click  or choose 'Send To Device' from the **Transfer** menu.
2. You should see 'Storage Card Reader' followed by a drive letter in the 'Device' field. If not, click **Find Device**. Make sure to select the correct drive letter from the 'Device' field.
3. Click **Send**. MapSource will begin sending maps to your CF or SD card. Remember, you can only send maps to your CF or SD card.

Transferring MapSource Data


Sending Maps to an iQue



To send maps to an iQue:

1. Click  or choose 'Send To Device' from the **Transfer** menu.
2. You should see 'iQue' followed by a user name in the 'Device' field. If not, click **Find Device**. Select the correct user name.
3. Under the 'Map Storage Location' field, select where you want to save your maps. Make sure 'Maps' is checked under 'What to Send.'
4. Click **Send**. MapSource will begin sending maps. Remember, you can only send maps to your iQue.
5. Synchronize your iQue with your computer (perform a HotSync®) so that your iQue will receive the maps.

To send data to a cf Que:

1. Click  or choose 'Send To Device' from the **Transfer** menu.
2. You should see 'cf Que' in the 'Device' field. If not, click **Find Device**.
3. Under the 'Map Storage Location' field, select where you want to save your data.
4. Under 'What to Send,' check the boxes next to each type of data you want to send.
5. Click **Send**. MapSource will begin sending data to your cf Que.

Reference

Transferring MapSource Data

The Receive From Device Icon




Receiving Data from a Serial GPS Unit




Transferring Data from a GPS Unit to MapSource

If your GPS unit has a storage card, be sure the card is inserted correctly into the unit. Also, make sure your GPS unit or card reader is connected to your computer. Set your unit's Data Transfer mode to 'Garmin' if applicable. See your GPS unit owner's manual for further instructions. Then follow the instructions below that correspond to your GPS unit or card reader.

To receive data from a serial or USB GPS unit:

1. Click  or choose 'Receive From Device' from the **Transfer** menu.
2. You should see the name of your GPS unit in the 'Device' field. If not, click **Find Device**.
3. Under 'What to Receive,' check the boxes next to the types of data you want to receive.
4. Click **Receive**. MapSource will begin receiving data from your GPS unit.

To receive data from a USB Card Programmer:

1. Click  or choose 'Receive From Device' from the **Transfer** menu.
2. You should see 'USB Data Card Programmer' in the 'Device' field. If not, click **Find Device**.
3. Under 'What to Receive,' check the boxes next to each type of data you want to receive.
4. Click **Receive**. MapSource will begin receiving data from your data card.

Transferring MapSource Data


Receiving Maps from a CF or SD Card




Receiving Tracks from an iQue




To receive maps from a CF or SD Card Reader:

1. Click  or choose 'Receive From Device' from the **Transfer** menu.
2. You should see 'Storage Card Reader' followed by a drive letter in the 'Device' field. If not, click **Find Device**. Make sure to select the correct drive letter from the 'Device' field.
3. Click **Receive**. MapSource will begin receiving maps from your CF or SD card. Remember, you can receive only maps from your CF or SD card.

To receive tracks from an iQue:

1. If you have not downloaded Track Conduit, you can do so at <http://www.garmin.com>.
2. Synchronize your iQue with your computer (perform a HotSync®) so that your iQue can send tracks.
3. In MapSource, click  or choose 'Receive From Device' from the **Transfer** menu.
4. You should see 'iQue' followed by a user name in the 'Device' field. If not, click **Find Device**. Select the correct user name.
5. Under 'What to Receive,' make sure the box next to 'Tracks' is checked.
6. Click **Receive**. MapSource will begin receiving tracks from your iQue.

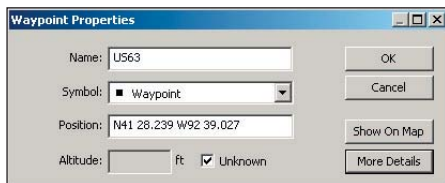
To receive data from a cf Que:

1. Click  or choose 'Receive From Device' from the **Transfer** menu.
2. You should see 'cf Que' in the 'Device' field. If not, click **Find Device**.
3. Under 'What to Receive,' check the boxes next to the types of data you want to receive.
4. Click **Receive**. MapSource will begin receiving data from your cf Que.

Reference

Waypoints

Waypoint Properties Dialog Box




When you create a waypoint, you will see the **Waypoint Properties** dialog box. Click **More Details** to see more waypoint properties (shown on p. 56)

Creating Waypoints

A waypoint is any point on the Graphic Map that you store in memory. You can make a waypoint anywhere on the Graphic Map, including cities, points of interest, addresses, and intersections. To find features or places and then create waypoints, see “Finding Places,” p. 57. Once you have marked (created) waypoints, you can view them on the Graphic Map and use them to create routes. See “Creating Routes,” p. 62.

When you create a waypoint, MapSource automatically names the waypoint based on its location. If you create a waypoint on an existing map feature, MapSource bases the waypoint name on the feature. If you create a waypoint on an open location, MapSource names the waypoint with a number. You can change the name of the waypoint and other waypoint properties at any time (see p. 55-56).

To create a waypoint with the Waypoint tool:

1. Click the **Waypoint** tool  or select 'Waypoint' from the **Tools** menu.
2. Place your mouse pointer at the location where you want to create a waypoint and click the left mouse button. To create a waypoint in the center of the Graphic Map, press **Ctrl + W** on your keyboard. The **Waypoint Properties** dialog box appears.
3. Make any changes to the waypoint properties that you wish. See “Editing Waypoints,” p. 56, to learn what each waypoint property means.
4. You can link a file (such as a picture or Web page) to the waypoint for future reference. Click **Browse** to locate the file on your computer.
5. Click **OK** to save the waypoint. Click **Cancel** to exit without creating the waypoint.

The Waypoint Properties Dialog Box

Once you have created a waypoint, you can access the **Waypoint Properties** dialog box at any time to change the properties you have chosen.

View the dialog box in one of the following ways:

- Double-click a waypoint name in the **Waypoints** tab list
- Double-click a waypoint on the Graphic Map
- Highlight a waypoint in the **Waypoints** tab list or on the Graphic Map, then click the right mouse button and select 'Waypoint Properties.'
- Highlight a waypoint in the **Waypoints** tab list or on the Graphic Map, then select 'Waypoint Properties' from the **Edit** menu.

Naming Waypoints— Initially, the name of the waypoint will be six characters long. Keep in mind that most Garmin GPS units limit waypoint names to six characters. If you name a waypoint with more than six characters, the name may be cut off when you transfer the waypoint to your GPS unit. If multiple waypoints have identical names when cut off, only one of the waypoints will be stored in the GPS. Refer to your GPS unit owner's manual to determine your GPS unit's limitations.

Writing Comments— Some GPS units have a maximum number of characters allowed in the comment field. If the comment that you enter exceeds the maximum amount of characters, the comment will be cut off. Refer to your GPS unit owner's manual to determine your unit's limitations

Reference

Waypoints

The Waypoint Properties Dialog Box

The screenshot shows the 'Waypoint Properties' dialog box with the following details:

- Name:** US63
- Symbol:** Waypoint
- Position:** N41 28.239 W92 39.027
- Altitude:** ft, Unknown
- Depth:** ft, Unknown
- Proximity:** mi, Unknown
- Temperature:** °F, Unknown
- Comment:** US 63
- Display:** Symbol & Name
- Categories:** Category 1, Category 2, Category 3, Category 4, Category 5, Category 6, Category 7, Category 8, Category 9 (all unchecked)
- Date Modified:** 5/6/2004 4:29:26 PM
- Link:** File/URL: http://www.garmin.com

See p. 56 for a detailed description of each property.

Waypoints

Choose from over 100 different symbols. Your GPS may not support all symbols.

Position of waypoint on map, shown according to Position Format chosen for map.

Enter altitude, depth, proximity, and temperature, if known.

Enter a comment here.

Choose how you want to display the waypoint on the Graphic Map.

Name the waypoint here.

Click to save changes and exit dialog box.

Click to exit dialog box without saving changes.

Click to show waypoint in the center of the Graphic Map.

Click to show fewer waypoint properties.

Choose a category or categories where you want to list the waypoint. To set up categories, choose 'Preferences' from the Edit menu. See p. 26.

Link a file, such as an image or web page, to your waypoint.

Click to view linked file.

Click to find file on your computer.

Waypoint Properties

Name:

Symbol:

Position:

Altitude: ft Unknown

Depth: ft Unknown

Proximity: mi Unknown

Temperature: °F Unknown

Comment:

Display:

Date Modified: 5/6/2004 4:29:26 PM

Categories:

- Category 1
- Category 2
- Category 3
- Category 4
- Category 5
- Category 6
- Category 7
- Category 8
- Category 9

Link

File/URL:

Finding Places

In order to create routes, you need to have somewhere to go! With some MapSource products, you can use the **Find Places** feature to locate cities, points of interest (such as restaurants, parks, and shops) addresses, intersections, or waypoints. If you have not unlocked your MapSource product, your search options will be greatly reduced. To get the most out of your MapSource product, unlock your maps. See “Unlocking Maps,” p. 8.

Once you have found a place you want to visit, you are ready to create a route to that place. See “Routes,” p. 62 for more information.



NOTE: You may have fewer Find Places options, depending on your MapSource product.

As you type places to search for in the **Find Places** dialog box, MapSource uses an “auto-complete” list to make suggestions. For example, as you type in the name of a city, a list of cities will appear containing the letters you are typing. You can choose the city directly from the auto-complete list or finish typing the name of the city.



NOTE: If the place you are searching for does not appear in the auto-complete list, MapSource will not allow you to continue typing. Make sure you are spelling the name of the place correctly.

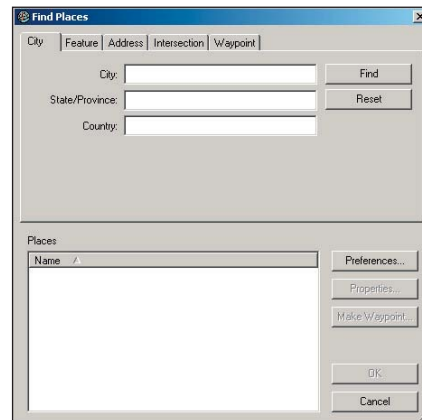
Reference

Finding Places

The Find Toolbar



The Find Places Dialog Box



Reference

Finding Places

The Find Places Icon



Finding a Point of Interest

Find Places

City | Feature | Address | Intersection | Waypoint

Place Category: Food & Drink

Place Subcategory: Deli/Bakery

Name:

City: Olathe

State/Province: KS (Kansas)


Country:

Places


Name

- Bagel & Bagel, Olathe, KS, USA
- Blimpie Subs & Salads, Olathe, KS, USA
- Planet Sub, Olathe, KS, USA
- Schlotzsky's Deli, Olathe, KS, USA
- Subway Sandwiches & Salads, Olathe, KS, USA

To find a city:

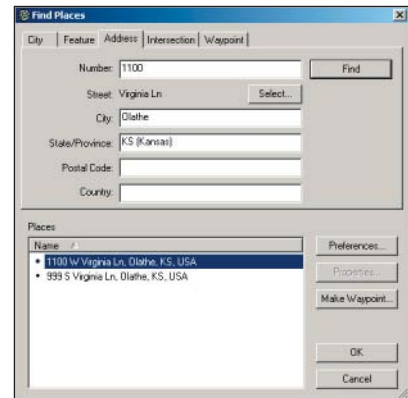
1. Click  or select 'Find Places' from the **View** menu. The **Find Places** dialog box appears.
2. Under the **City** tab, enter a city name in the 'City' field. To narrow your search, enter the state, province, or country. Highlight the name of the city in the auto-complete list or finish entering the city name.
3. Click **Find** to show a list of city/state matches in the search results list. As you highlight each city name, you will see the city in the center of the Graphic Map.
4. Highlight the correct city and click **Make Waypoint** if you want to use this city as part of a route. Otherwise, click **OK** to close the **Find Places** dialog box. Click **Cancel** to exit and return to the part of the map you were previously viewing.

To find a feature/Point of Interest (POI):

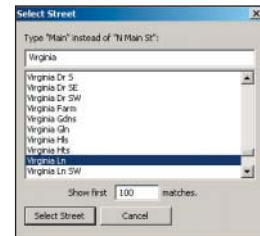
1. Click  and then the **Feature** tab.
2. Select a category from the **Place Category** drop-down menu. To narrow your search further, select a sub-category from the **Place Subcategory** drop-down menu.
3. Enter the name of a feature and the city and state to search for a specific point of interest, or enter only the city and state to search for all points of interest of that type in a city. Then click **Find**.
4. Highlight the correct feature from the list under 'Places.' To view the feature's address and telephone number, click **Properties**. Click **Make Waypoint** if you want to use this place as part of a route. Click **OK** to exit. Click **Cancel** to exit and return to the part of the map you were previously viewing.

Finding Places


Finding an Address




Selecting a Street



To find an address or street:

1. Click  and then the **Address** tab.
2. If you are searching for an address, enter the number of the address in the 'Number' field.
3. To enter a street name, click **Select** and begin typing the street name. Do not type directional words (such as North or N) or types of streets (Dr, Ave, St, Rd). Highlight the correct street name from the list and click **Select Street**.
4. To narrow your search, enter the city, state, or both and then click **Find**. A list of addresses or streets will appear under 'Places.' If you see the message, 'No items found,' try using another more general street name.
5. Highlight the correct address or street to view it on the map. Click **Make Waypoint** to create a waypoint at this address. Click **OK** to exit the dialog box. Click **Cancel** to exit and return to the part of the map you were previously viewing.

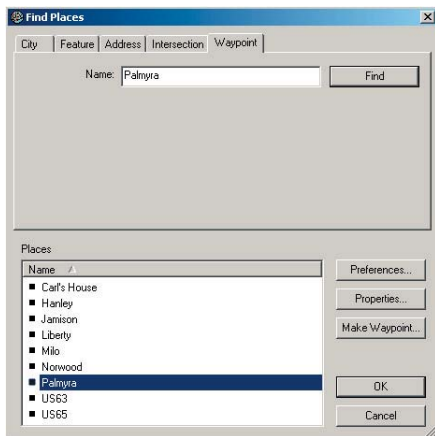
To find an intersection:

1. Click  and then the **Intersection** tab.
2. Click **Select**, enter the first street name, and click **Select Street**. Repeat these steps for the second street name. To narrow your search, enter the city, state, postal code, and country if available, and then click **Find**.
3. Enter additional information such as city or state to further narrow your search and then click **Find**. A list of intersections will appear under 'Places.'
4. Highlight the correct intersection to view it on the map. Click **Make Waypoint** to create a waypoint at this intersection. Click **OK** to exit the dialog box. Click **Cancel** to exit and return to the part of the map you were previously viewing.


Reference

Finding Places

Finding a Waypoint



To find a waypoint:

1. Click  and then the **Waypoint** tab.
2. Type the name of the waypoint you want to search for in the 'Name' field. Highlight the correct waypoint in the auto-complete list and then click **Find**. A list of waypoints will appear under 'Places.'
3. Highlight the correct waypoint from the 'Places' list. You will see the waypoint in the center of the Graphic Map. Click **Properties** to rename or modify the waypoint. Click **OK** to exit the dialog box. Click **Cancel** to exit and return to the part of the map you were previously viewing.




NOTE: The **Waypoint** tab is only displayed in the *Find Places* dialog box if you have created waypoints or transferred them into *MapSource* from your *GPS* unit.


Finding Nearest and Recently Found Places

Find Nearest Places locates features, points of interest, and other places near a specific location on the Graphic Map. You can find places nearest a waypoint, any map location, or the center of the Graphic Map. Recently Found Places lets you quickly access places you have searched for recently.

To find places nearest a location:

1. Click  to find a place near the center of the Graphic Map, or right-click a location or a waypoint on the Graphic Map and choose 'Find Nearest Places.'
2. Search for cities, points of interest, addresses, streets, intersections, or waypoints as described above.

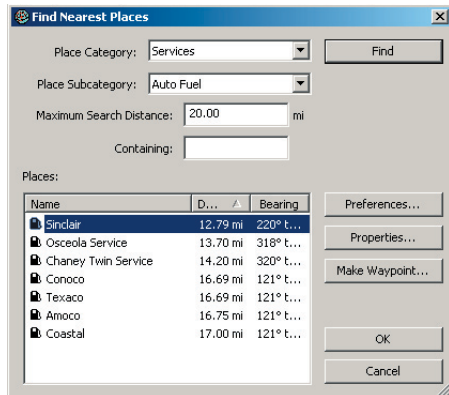
To view recently found places:

1. Click  or choose 'Recently Found Places' from the **Find** menu.
2. Choose a place from the list of recently found places. The location will appear in the center of the Graphic Map. Click **Make Waypoint** if you want to use this location in a route. Click **OK** to exit. Click **Cancel** to exit and return to the part of the map you were previously viewing.

Reference

Finding Places

Finding a Nearest Place




Routes

The Route Tool



Creating Routes

Routes tell you how to get from one place to another. You can create and modify routes in MapSource by using the **Route** tool  on the **Tools** toolbar, or by using the **Route Properties** dialog box. Depending on your MapSource product, you can create a direct route (a straight-line route, “as the crow flies”), or an auto-route (turn-by-turn over roads). See p. 27 to change the way MapSource calculates routes.



NOTE: *Not all MapSource products can create an auto-route. You must be using a routable MapSource product for MapSource to automatically calculate a route.*

Using the Route Tool



With the **Route** tool, you can create routes by clicking each point or place on the map you want to include. Select the **Route** tool in one of the following ways:

- Click the **Route** tool .
- Select **Route** from the **Tools** menu.
- Click the right mouse button where you want to start the route on the Graphic Map and select **Begin Route**.


You can also create routes, add waypoints to routes, and rearrange routes with the **Route Properties** dialog box. See “Using Route Properties,” p. 65.

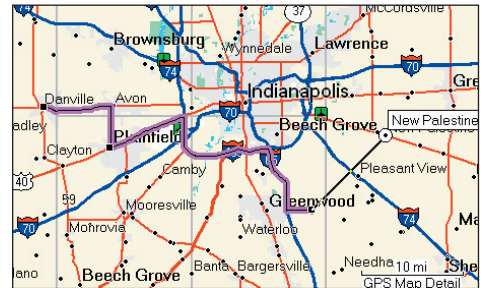
Routes

To create a route with the Route Tool:

1. Click  and then click the waypoints or map locations in the order you want them to go in the route. If you click directly on the map (not a waypoint), MapSource creates a new waypoint at that location and names it automatically. Each time you click to add a point to the route, you will see lines (direct routes) or colored lines along roads (auto-routes) that connect one point to the next.
2. If you want to add waypoints or features to your route that are far apart on the Graphic Map, use **Find Places**  to locate them quickly on the map while you are in the middle of creating your route. See "Finding Places," p. 57, for more information.
3. When you have finished adding points to your route, press **Esc** on your keyboard or right-click the last point on your route and select **Cancel**. MapSource will list the route under the **Routes** tab and name the route automatically using the names of the first and last waypoints.

To insert waypoints into a route on the Graphic Map:

1. Click the **Selection** tool .
2. Click a route on the Graphic Map to select it, or click the route name listed under the **Routes** tab. When you select a route, it is highlighted in yellow.
3. Click the left mouse button on the route leg you want to add a waypoint to. The mouse pointer will change to show a (+) and a small route icon, and the route will appear "flexible." If you click a part of the route by mistake, press **Esc** on your keyboard.
4. Drag the mouse to the waypoint or location on the map you want to add and click the left mouse button to add that point to the route.
5. Repeat these steps to insert additional waypoints. Click the left mouse button away from the route or press the **Esc** key on your keyboard to quit and save the changes to the route.

Creating a Route with the Route Tool

As you connect each waypoint or location on the Graphic Map, MapSource calculates turn-by-turn directions (if using auto-routing) and highlights the route for you. Add points to a route with the Selection Tool by clicking a route leg and dragging it to another waypoint or location on the map.

Reference


Routes

Moving a Waypoint to a New Location




Click the waypoint you want to move and drag it to a new location on the map. When you release the mouse button, MapSource will recalculate your route to include the new location.

To add a waypoint to the beginning or end of a route:


1. Click the **Selection** tool .
2. Click a route on the Graphic Map to select it, or click the route name listed under the **Routes** tab. When you select a route, it is highlighted in yellow.
3. Click the first or last waypoint in the route. The mouse pointer changes to show a (+) and a small route icon.
4. Drag the mouse to the waypoint or map location you want to add to the route and click the left mouse button.
5. Repeat these steps to add more waypoints. Click the right mouse button and select **Cancel**, or press the **Esc** key on your keyboard to quit and save changes to the route.

To move a waypoint to another location in a route:

1. Click the **Selection** tool .
2. Click a route on the Graphic Map to select it, or click the route name listed under the **Routes** tab. When you select a route, it is highlighted in yellow.
3. Click the waypoint you want to move. The mouse pointer changes to show a curved arrow and a small Waypoint icon, and the route appears "flexible."
4. Position the mouse pointer where you want to move the waypoint and click the left mouse button to move the waypoint.

Routes


To remove a waypoint from a route:


1. Click the **Selection** tool .
2. Click to select the route waypoint you want to remove. Then right-click and select 'Remove Waypoint from Route' or press **Ctrl + Delete**.



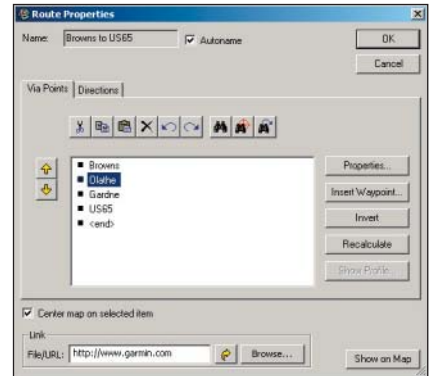
NOTE: If you highlight the waypoint and simply press **Delete**, you will delete the waypoint from MapSource.

Using Route Properties

You can create a route with the **Route Properties** dialog box by inserting existing waypoints and, with some MapSource products, you can insert points of interest, cities, or addresses with **Find Places** . Open the **Route Properties** dialog box by selecting 'New Route' from the **Edit** menu or by pressing **Ctrl + R** on your keyboard.

You can also create routes, add waypoints to routes, and rearrange routes with the **Route** tool  dialog box. See "Using the Route Tool," p. 62.

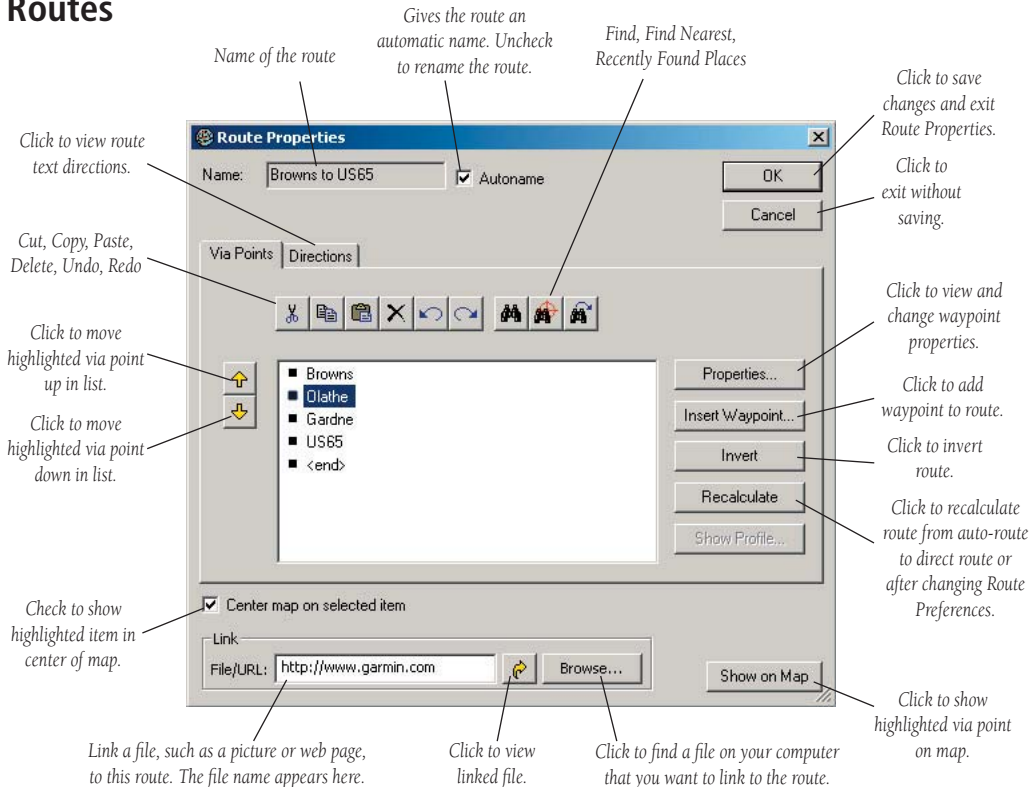
Route Properties Dialog Box




See p. 66 for a more detailed image.

Reference

Routes



To create a route with Route Properties:

1. Open the **Route Properties** dialog box (press **Ctrl + R**).
2. To add an existing waypoint to the route, click **Insert Waypoint**. Choose the waypoint from the list that appears and click **OK**.
3. To add a city, point of interest, address, or intersection that you have not already marked as a waypoint, click **Find Places**  inside the dialog box under the **Via Points** tab.
4. Repeat steps 2 and 3 until you are finished adding points to your route. As you add each point, you will see the points listed in order from first to last under the **Via Points** tab.
5. To rearrange the points in the list, highlight each point and click the arrows to move the point up or down in the list. To reorder the points from last to first, click **Invert**. To see points on the map, highlight each point and click **Show on Map**, or check the box next to **Center** map on selected item to see each point in the center of the map.
6. Click **OK** to save the new route.

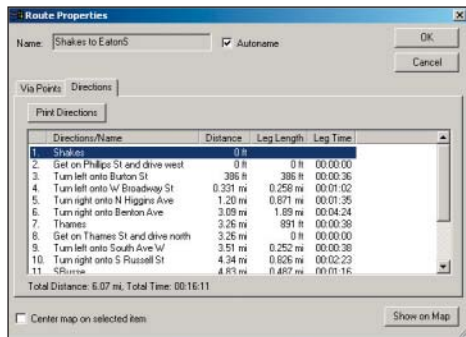
To add a point to a route with Route Properties:

1. Double click the route under the **Routes** tab to open the **Route Properties** dialog box.
2. Determine where you want to add the point to your route. Then highlight the via point in the list directly below where you want to add the point. To add the via point to the end of the route, highlight <end>.
3. Click **Find Places** or **Insert Waypoint** to add the point to your route. The point appears in the list. To rearrange the points in the list, highlight a point and click the arrows to move it up or down in the list.
4. Click **OK** to save changes. MapSource will recalculate the route.

Reference

Routes

Text Directions for a Route



Click the **Directions** tab to view text directions. You can print the text directions by clicking **Print Directions**, or you can copy the directions into another application.

To rename a route:

1. Double click the route under the **Routes** tab to open the **Route Properties** dialog box.
2. Uncheck the box next to 'Autoname.' Enter a new name for the route and click **OK** to save changes.

To invert a route:

1. Double click the route under the **Routes** tab to open the **Route Properties** dialog box.
2. Click **Invert** to reorder the route points from last to first. Click **OK** to save changes.



To link a file to a route:

1. Double click the route under the **Routes** tab to open the **Route Properties** dialog box.
2. Click **Browse** to locate the file on your computer you want to link to the route. Click **OK** to save changes.

To view and print text directions for an auto-route:

1. Double click the route under the **Routes** tab to open the **Route Properties** dialog box.
2. Click the **Directions** tab to view text directions, distance, leg length, leg time, and course for the route.
3. Click **Print Directions** to print.

To delete a route:

1. Use the **Selection** tool  to select a route on the Graphic Map, or click the route name listed under the **Routes** tab. When you select a route, it is highlighted in yellow.
3. Click , press the **Delete** key on your keyboard, or click the right mouse button on the highlighted route and select 'Delete Route.'

Tracks and Real-Time Tracking

Think of a track as a trail of footprints: the trail shows you exactly where you have been. Each “footprint” of the track is called a track point. As you move, your GPS unit records a track point every second (by default) with the time and your position and speed. Your GPS unit then saves these points as a track.

You can record your own real-time tracks in MapSource using your GPS unit and a laptop computer. When you begin real-time tracking, MapSource reads information from your GPS unit, shows the GPS unit on the Graphic Map, displays track data in the **GPS** tab, and records a track.



NOTE: *iQue and cf Que users cannot record real-time tracks with MapSource*



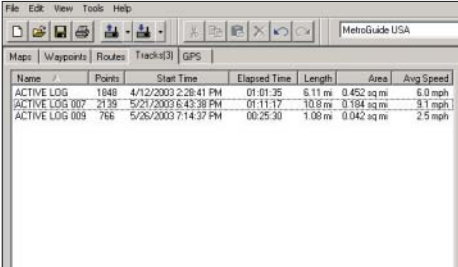
NOTE: *To record real-time tracks, you must unlock your MapSource product, if necessary. See “Unlocking Maps,” p. 8.*

You can also view tracks in MapSource that you have received from your GPS unit. The tracks appear in the Tracks tab after you receive them. See “Transferring Data,” p. 47 to learn how to receive data from your GPS unit.

Reference

Tracks and Real-Time Tracking

The Tracks Tab



Name	Points	Start Time	Elapsed Time	Length	Area	Avg Speed
ACTIVE LOG 1948	1948	4/12/2003 2:28:41 PM	01:01:25	6.11 mi	0.452 sq mi	6.0 mph
ACTIVE LOG 007	2138	5/21/2003 6:43:38 PM	01:11:17	10.8 mi	0.184 sq mi	9.1 mph
ACTIVE LOG 009	766	5/26/2003 7:14:37 PM	00:25:30	1.08 mi	0.042 sq mi	2.5 mph

Reference

Tracks and Real-Time Tracking

The GPS Tab

Use the **GPS** tab to begin and end real-time tracking. The tab displays information about the current track, allows you to begin a new track, and allows you to change the way MapSource records track points.

The screenshot shows the GPS tab interface with the following callouts:

- Stop Tracking**: Click to stop tracking or to start tracking.
- Speed**: Shows current speed. (30.0 mph)
- Altitude**: Shows current altitude. (1085 ft)
- Track**: Shows current track. (0° true)
- Compass**: Shows current compass heading.
- Position**: Shows current position. (N38 51.338 W94 47.929)
- Date and Time**: Shows current date and time. (7/28/2003 2:11:17 PM)
- EPE**: Estimated Position Error, shows estimated accuracy of your position on map. (14.6 ft)
- DOP**: Dilution Of Precision, shows how well satellites can determine your position by a number from 1-10. A lower number is better.
- Keep vehicle visible on map**: Check to keep your GPS unit visible on Graphic Map. (checked)
- Record track**: Check to record track. (checked)
- Filter...**: Click to filter track points.
- Select Device...**: Click when not currently tracking to select the GPS unit you want to use for real-time tracking.

To start Real-Time Tracking:

1. Make sure your GPS unit is connected to a serial or USB port on your computer. Set the Serial Data Format on your GPS unit to Garmin or NMEA, if applicable. Some older GPS units do not support Garmin format. See your GPS unit owner's manual for instructions.
2. In MapSource, click the **GPS** tab and then click **Select Device**. Click 'Serial Port' or 'USB Device' to indicate how your GPS unit is connected to your computer. If you are using a serial port, choose the correct serial port from the list (COM1 or COM2). If you choose 'USB Device,' make sure the name of your GPS unit appears in the drop-down menu to the right.
3. Check the box next to 'Record track' and then click **Start Tracking**. MapSource will begin to track and record your movements. You will see a message under **Start Tracking** that describes what information MapSource is receiving. The recorded track will be listed under the **Tracks** tab.
4. Check the box next to 'Keep Vehicle Visible on Map' so that your GPS unit is always in the center of the Graphic Map.
5. When you are finished recording tracks, click **Stop Tracking**.

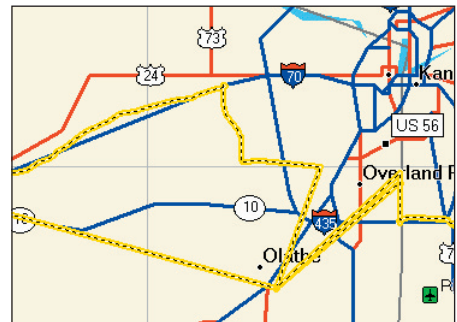
To view a Track on the Graphic Map:

1. Highlight the track name in the **Tracks** tab. The track will appear highlighted in yellow on the Graphic Map.
2. Right-click on the track and select 'Show Selected Track on Map' to see the entire track in the center of the Graphic Map. Zoom in to view track points and track legs.

Reference

Tracks and Real-Time Tracking

Viewing Tracks on the Graphic Map



Tracks on the Graphic Map appear as dotted lines that are highlighted in yellow.

Tracks and Real-Time Tracking

Viewing and Editing Track Properties

The **Track Properties** dialog box lets you change the track name, invert the track, view a vertical profile of the track, and view and edit track points. To open the **Track Properties** dialog box, double-click a track in the **Tracks** tab or right-click the track and choose 'Track Properties.'

The **Track Properties** dialog box is shown with the following components and annotations:

- Name:** ACTIVE LOG 001
- Buttons:** OK, Cancel
- Track Points:** A table with columns: Index, Time, Altitude, Leg Length, Leg Time, Leg Speed, Leg Course, Position. Row 3 is highlighted.
- Track Statistics:** A table with columns: Points, Length, Area, Elapsed Time, Avg. Speed. Row 1 is highlighted.
- Link:** File/URL: http://www.garmin.com
- Buttons:** Invert, Filter..., Show Profile..., Show On Map

Annotations and their locations:


- Shows name of track. Enter new name if desired.** (Points to the Name field)
- Shows all recorded information for each track point.** (Points to the Track Points table)
- Shows totals for information gathered for highlighted track point.** (Points to the Track Statistics table)
- Link a file, such as an image or web page, to this track.** (Points to the Link field)
- Click to view linked file.** (Points to the folder icon button)
- Find file/URL on computer to link to.** (Points to the Browse... button)
- Cut, Copy, Paste, Delete, Undo, Redo** (Points to the toolbar icons)
- Click to show selected track in center of Graphic Map.** (Points to the Center map on selected item(s) checkbox)
- Click to save changes to track and exit.** (Points to the OK button)
- Click to exit without saving changes.** (Points to the Cancel button)
- Click to reverse the order of track points.** (Points to the Invert button)
- Click to filter track points of selected track. See p. 72.** (Points to the Filter... button)
- Click to show vertical track profile, if available. See p. 73.** (Points to the Show Profile... button)
- Click to show highlighted track on map.** (Points to the Show On Map button)

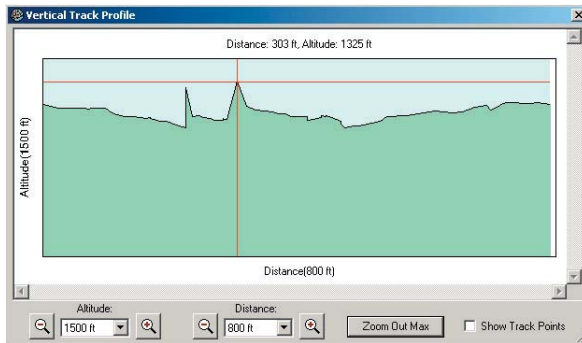
Tracks and Real-Time Tracking

To invert a track:

1. Open the **Track Properties** dialog box.
2. Click **Invert**. MapSource automatically reverses the order of track points. Click **OK**.

To link a file to a track:

1. Open the **Track Properties** dialog box.
2. Click **Browse**. Find the file on your computer you want to link to this track and click **OK**. The name of the file will appear in the 'File/URL' field.
3. To view the file, click the **Open Link** icon .

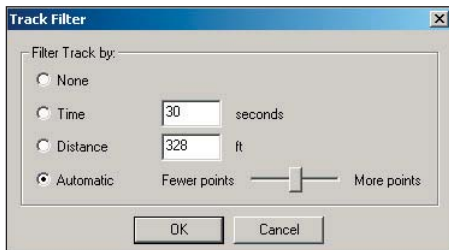


When you click **Show Profile**, the **Vertical Track Profile** dialog box appears. This box shows you a graphical representation of your altitude and how it changes over each track point you log. When you click the graph, lines appear that show you the exact altitude at each track point. Click to move the lines to different points on the graph.

Reference

Tracks and Real-Time Tracking

Track Filter Dialog Box




Filtering Tracks

When you filter a track, you control how often MapSource records track points. Each track point consists of the time the point was recorded and your position and speed. Filtering tells MapSource to record these points at specified intervals. You can filter by time or distance, or you can let MapSource automatically filter the track points. For example, you can tell MapSource to record a track point every thirty seconds or every five hundred feet, or you can let MapSource automatically choose the track points that best fit your path.


To filter a track:

1. To filter a track as it is being recorded, click **Filter** on the **GPS** tab. To filter a previously recorded track, open the **Track Properties** dialog box and click **Filter**.
2. Choose whether you want to filter by time, by distance, or automatically. If you click 'Time,' enter the length of time you want MapSource to wait before recording each track point. If you click 'Distance,' enter the distance in feet you want to move before MapSource records each track point. If you click 'Automatic,' move the slider bar to allow MapSource to record fewer track points or more track points.
3. Click **OK**.

To save a MapSource document:

1. Click the **Save** icon  or choose 'Save' from the **File** menu.
2. Select a location for your MapSource document, name the MapSource file, and click **Save**.


To open a previously saved MapSource document:

1. Click the **Open** icon  or choose 'Open' from the **File** menu. The first time you open a saved document, you will see the Document Format dialog box. Click to choose which file type you want to open. Check the box if you do not want to see the Document Format dialog box again.
2. Browse to the saved MapSource document and click **Open**.

Only one document can be open in MapSource at a time, so if you open a new document, MapSource will close your current document. However, you can run several instances of MapSource simultaneously, allowing you to move information between documents easily.

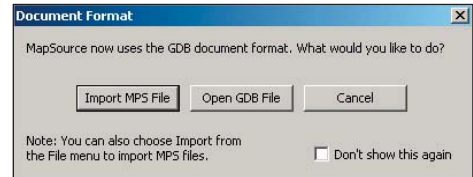
Printing the Graphic Map

The Print, Print Preview, and Print Setup options function like other Windows applications. Choose 'Print Setup' from the **File** menu to select a printer and set printing properties. You may need to lower the DPI settings for the image to print.

Select 'Print Preview' from the **File** menu to see a preview of what will be printed. Click the **Print** icon  or choose 'Print' from the **File** menu to print the current Graphic Map display. To print text directions for a route, see "To view and print text directions for an auto-route," p. 68. To print other information, you can copy the data and paste it into another application.

Saving, Opening, and Printing in MapSource

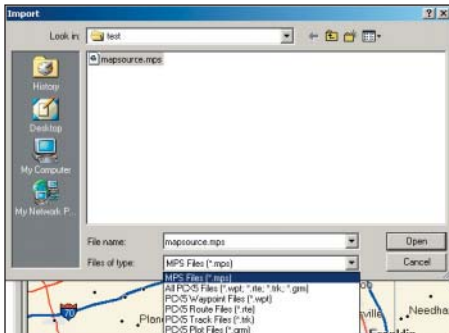
Document Format Dialog Box



Reference

Importing Data

Importing Files



Importing .mps and Garmin PCX5 Data Files

You can import files saved in .mps format and Garmin PCX5 data files to MapSource. MapSource can display waypoints (.wpt), routes (.rte), tracks (.trk), or one of the maps (.gri) provided with PCX5.

To import .mps or Garmin PCX5 data:

1. Choose 'Import' from the **File** menu.
2. Select the type of file you want to import: .mps, .wpt, .rte, .trk, .gri, or 'All PCX5 files.'
3. Browse to the file you want to open and click **Open**. If you are opening a .gri file, you may need to provide more information so MapSource can import the file accurately.



NOTE: If you are using a PCX5 map outline, you can hide GPS map detail (press **CTRL + G**) to avoid screen clutter.

Appendix A: Keyboard Shortcuts

File Menu

New DocumentCtrl + N
 Open Existing DocumentCtrl + O
 Save Document Ctrl + S
 Print Graphic Map Ctrl + P

Edit Menu

Undo Ctrl + Z
 Redo Ctrl + Y
 Cut Ctrl + X
 Copy Ctrl + C
 Paste Ctrl + V
 Delete Del
 Select All Ctrl + A
 New Waypoint Ctrl + W
 New Route Ctrl + R
 New Track Ctrl + Shift + T
 Remove Waypoint from Route
 Ctrl + Del
 Preferences Ctrl + Shift + P

Find Menu

Find Places Ctrl + F
 Find Nearest Places Ctrl + Shift + F
 Recently Found Places ...Ctrl + Alt + F

View Menu

Show Selected Item on Map ..Ctrl + D
 Go To Position Ctrl + T
 Zoom In +
 Zoom Out -
 Zoom In Max.....Ctrl + +
 Zoom Out RegionCtrl + -
 GPS Map Detail.....Ctrl + G
 Show Crosshair Ctrl + H
 Pan Map Right . Ctrl + right arrow key
 Pan Map Left Ctrl + left arrow key

Tools Menu

Map Tool m
 Zoom Tool z
 Hand Tool h
 Waypoint Tool w
 Route Tool..... r
 Selection Tool s
 Distance/Bearing Tool d

Utilities Menu

Unlock Maps.....Ctrl + U

Help Menu

Help File F1

Appendix

Appendix B: Map Legends Lines and Areas

Street Or Roadway
Ramp
Arterial Roadway
Other Through Hwy, State Hwy Or Major Arterial
Principal Hwy, Us, Or Limited Acc Hwy
Major Hwy Connector
Major Hwy
Stream Or River
Intermittent/Dry Stream Or River
Railroad
Shipping Route
Land Contour
Depth Contour
Political Boundary

Flat (Tidal, Sand, Gravel, Mud, Etc.)
Intermittent/Dry River or Lake
Wetland
Glaciers
Golf Course or Park
Lake, River, Sea, Ocean
Man-Made Areas
Metro Areas
Woods
Fishing Area
Restricted Water

Appendix C: Software License Agreement

THIS SOFTWARE IS OWNED BY GARMIN LTD OR ITS SUBSIDIARIES (HEREINAFTER COLLECTIVELY REFERRED TO AS “GARMIN”) AND IS PROTECTED UNDER COPYRIGHT LAWS AND INTERNATIONAL COPYRIGHT TREATIES. THIS SOFTWARE IS LICENSED, NOT SOLD. THIS SOFTWARE IS PROVIDED UNDER THE FOLLOWING LICENSE WHICH DEFINES WHAT YOU MAY DO WITH THE PRODUCT AND CONTAINS LIMITATIONS ON WARRANTIES AND/OR REMEDIES.

IMPORTANT: CAREFULLY READ THIS LICENSE BEFORE USING THIS PRODUCT. INSTALLING, COPYING, OR OTHERWISE USING THIS PRODUCT INDICATES YOUR ACKNOWLEDGMENT THAT YOU HAVE READ THIS LICENSE AND AGREE TO ITS TERMS. IF YOU DO NOT AGREE, RETURN THE COMPLETE PRODUCT TO GARMIN INTERNATIONAL, INC. CUSTOMER SERVICE, 1200 EAST 151st STREET, OLATHE, KS 66062 WITHIN 10 DAYS OF THE DATE YOU ACQUIRED IT FOR A FULL REFUND.

1. LICENSE: Garmin (“we” or “us”) provides you with storage media containing computer software (the “Program”) which may also include digital cartographic data and “online” or electronic documentation, and printed materials (together called the “Product”) and grants you a limited non-exclusive license to use the Product in accordance with the terms of this License Agreement. The copyright and all other rights to the Product shall remain with us. You must reproduce any copyright or other notice marked on the Product on all copies you make.

2. YOU MAY:

- a) install and use one copy of the Product on a single computer or network. This copy is to be used by only a single user at a time. If you wish to use the Product for more users, you will need an additional license for each user.
- b) make one copy of the Product for archive or backup purposes.
- c) use a copy of the Product on a home or portable computer if that copy is never loaded at the same time it is loaded on your primary computer.
- d) transfer the Product to someone else only if you assign all of your rights under this License, cease all use of the Product, erase or destroy any copy (including the hard disk copy) made in support of your use of the Product, and ensure that the other person agrees to the terms of this License.

3. YOU MUST NOT:

- a) make copies of the Product except as expressly permitted in Section 2 of this License.
- b) translate, reverse engineer, decompile, or disassemble the Product except to the extent the foregoing restriction is expressly prohibited by applicable law.
- c) rent, lease, loan, sub-license, distribute, assign, or transfer the Product except as set out in Section 2 (d) above.

Appendix

Appendix C: Software License Agreement

d) modify the Product or merge all or any part of the Product with another program.

4. TERM: This License shall continue for as long as you use the Product. However, this License will terminate automatically and without notice from Garmin if you fail to comply with any of its terms or conditions. You must agree, upon termination, to destroy all copies of the Product. The Limitations of Warranties and Liability set out below apply even after termination.

5. LIMITATION OF WARRANTIES AND LIABILITY: THE PRODUCT IS PROVIDED ON AN "AS IS" BASIS, WITHOUT ANY WARRANTIES OR CONDITIONS, EXPRESS OR IMPLIED, INCLUDING, BUT NOT LIMITED TO, WARRANTIES OF MERCHANTABILITY, MERCHANTABILITY OR FITNESS FOR A PARTICULAR PURPOSE, OR THOSE ARISING BY LAW, STATUTE, USAGE OF TRADE, OR COURSE OF DEALING. THE ENTIRE RISK AS TO THE RESULTS AND PERFORMANCE OF THE PRODUCT IS ASSUMED BY YOU. NEITHER WE NOR OUR DEALERS OR SUPPLIERS SHALL HAVE ANY LIABILITY TO YOU OR ANY OTHER PERSON OR ENTITY FOR ANY INDIRECT, INCIDENTAL, SPECIAL, OR CONSEQUENTIAL DAMAGES WHATSOEVER, INCLUDING, BUT NOT LIMITED TO, LOSS OF REVENUE OR PROFIT, LOST OR DAMAGED DATA OR OTHER COMMERCIAL OR ECONOMIC LOSS, EVEN IF WE HAVE BEEN ADVISED OF THE POSSIBILITY OF SUCH DAMAGES, OR THEY ARE FORESEEABLE. WE ARE ALSO NOT RESPONSIBLE FOR CLAIMS BY A THIRD PARTY. OUR MAXIMUM AGGREGATE LIABILITY TO YOU SHALL NOT EXCEED THE AMOUNT PAID BY YOU FOR THE PRODUCT. THE LIMITATIONS IN THIS SECTION SHALL APPLY

WHETHER OR NOT THE ALLEGED BREACH OR DEFAULT IS A BREACH OF A FUNDAMENTAL CONDITION OR TERM OR A FUNDAMENTAL BREACH. SOME STATES/COUNTRIES DO NOT ALLOW THE EXCLUSION OR LIMITATION OF LIABILITY FOR CONSEQUENTIAL OR INCIDENTAL DAMAGES, SO THE ABOVE LIMITATION MAY NOT APPLY TO YOU.

6. RESTRICTED RIGHTS: If this Product is acquired by or for the U.S. Government, then it is provided with Restricted Rights. Use, duplication, or disclosure by the U.S. Government is subject to restrictions as set forth in subparagraph (c)(1)(ii) of The Rights in Technical Data and Computer Software clause at DFARS 252.227-7013, or subparagraphs (c)(1) and (2) of the Commercial Computer Software - Restricted Rights at 48 CFR 52.227-19, or clause 18-52.227-86(d) of the NASA Supplement to the FAR, as applicable. The contractor/manufacturer is Garmin International, Inc., 1200 E. 151st Street, Olathe, KS 66062, USA.

7. EXPORT CONTROLS: You agree not to export or re-export the Product to any country in violation of the export control laws of the United States of America.

8. GENERAL: This License is the entire agreement between us, superseding any other agreement or discussions, oral or written, and may not be changed except by a signed agreement. This License shall be governed by and construed in accordance with the laws of the State of Kansas, United States of America. If any provision of this License is declared by a court of competent jurisdiction to be invalid, illegal, or unenforceable, such a provision shall be severed from the License and the other provisions shall remain in full force and effect.

Symbols

- .grm files 76
- .mps files 76
- .rte files 76
- .trk files 76
- .wpt files 76

A

- About MapSource 34

B

- Basemap 20
- BlueChart 24, 36, 48, vi

C

- cf Que
 - receiving data from 53
 - sending data to 51
- Compact Flash (CF) Card 2, 50
 - receiving maps from 53
 - sending maps to 50
- Connecting GPS Unit to a Computer 18
 - verifying connection 18
 - with serial port 18
 - with USB port 18
- Copying 23

- Coupon Code 8
 - redeeming 9, 11
 - unlock certificate 11
 - where to find 8, 11

Crosshair

- showing 30

- Customer Service i

- Cutting 23

D

- Data Tabs 19, 21
 - cutting, copying, and pasting data 23
 - selecting all data 23
 - sorting data 21
- Delete 23
- Detailed Maps 20
 - GPS map detail 20
- Distance/Bearing Tool 32, 43
 - measuring area 43
 - measuring distance 43
- DOP (Dilution of Precision) 70

E

- E-mail MapSource files 22
- Edit Menu 23
 - preferences 24

- Edit Toolbar 23
- EPE (Estimated Position Error) 70
- Exiting MapSource 22
- Exporting files 22

F

- File Menu 22
- File Toolbar 22
- Filtering Tracks 74
 - track filter dialog box 74
- Finding Places 28, 57
 - addresses 59
 - and creating waypoints 58, 59
 - auto-complete 57
 - cities 58
 - features 58
 - finding nearest 61
 - Find menu 28
 - find places icon 58
 - intersections 59
 - points of interest 58
 - recently found places 61
 - streets 59
 - waypoints 60
- Find Menu 28
- Find Nearest Places 28, 61

Index

Find Toolbar 57
Fishing Hot Spots 48

G

Garmin Customer Code 11, 15
 updating information with 15
Garmin Data Card 2, 47
 erasing 33
Garmin Web site 1
Get Unit ID 33
Go To Position 30
GPS Map Detail 76
 showing/hiding 30
GPS Tab 70
GPS unit
 compatibility with MapSource 1
 connecting to a computer 18
 storing data 2
Graphic Map 19, 20, 42
 basemap 20
 changing map font 24
 detailed maps 20
 displaying map detail 24
 measuring distance on 43
 panning 42
 selecting all data 23

viewing zoom level 20
zooming 42

H

Hand Tool 32, 42
Help Menu 34
 contents 34
 index 34

I

Importing Files 22, 76
 .mps 76
 PCX5 76
Installing MapSource
 notes 7
 reinstalling 3
 selecting coverage areas 7
 uninstalling 7
 with data CDs 3, 6
 with setup CD 3, 4
InstallShield Wizard 4, 5, 16
 modifying regional coverage areas 16
 opening 16
 removing MapSource 17
 repairing MapSource 17
iQue 51

receiving tracks from 53
sending maps to 51

K

Keyboard Shortcuts 32, 77

L

LakeMaster 48
Latitude and Longitude 20
Lines and Areas 78
Linking Files
 to routes 66
 to tracks 72
 to waypoints 56

M

MapSource Documents
 opening 75
 saving 75
MapSource Interface 19
MapSource Tutorial 44
MapSource Updates 34
Maps Tab 44
 right-click menu 41
 viewing a map set 44
 viewing maps 41

Index

- Map Datum 20, 25
- Map Features
 - right-click menu 36
- Map Legends 78
- Map Sets 44
 - adding maps from multiple MapSource products 45
 - adding maps to 45
 - cutting, copying, pasting maps 41
 - deleting maps from 41
 - removing maps from 46
 - renaming 46
 - right-click menu 41
 - viewing map properties 41
- Map Tool 32, 45
- Measurement
 - changing units 25
- Menus 19
 - Edit menu 23
 - File menu 22
 - Find menu 28
 - Help menu 34
 - Right-click menus 35
 - Tools menu 32
 - Transfer menu 29
 - Utilities menu 33
- View menu 30
- Minimum System Requirements 1
- Modifying Mapsource Installation 16
- N**
 - Nearest Places
 - finding 61
 - New MapSource Document 22
- O**
 - Opening MapSource Documents 75
 - .gdb files 75
 - .mps files 75
- P**
 - Pasting 23
 - PCX5 files
 - importing 76
 - Position Format 20, 25
 - Preferences 24
 - display tab 24
 - file location tab 26
 - find tab 26
 - position tab 25
 - routing tab 27
 - time tab 26
- units tab 25
- waypoint categories tab 26
- waypoint tab 26
- Preprogrammed Data Cards 48
- Preprogrammed Points of Interest (POI)
 - Database 48
 - reloading 49
- Printing 22, 75
 - DPI settings 75
 - print preview 22, 75
 - print setup 22, 75
 - text directions 68
- Product Registration 15, i
- Properties
 - viewing 23
- R**
 - Real-Time Tracking 69, 71
 - starting 71
 - stopping 71
 - Receive From Device 52
 - CF or SD card reader 53
 - cf Que 53
 - iQue 53
 - serial GPS unit 52
 - USB card programmer 52

Index

- USB GPS unit 52
 - Recently Found Places 61
 - viewing 61
 - Redo 23
 - Regional Coverage Area
 - adding 16
 - deleting 14, 16
 - modifying 16
 - viewing properties 14
 - Registering MapSource 15, i
 - Registration Code 15
 - Reinstalling MapSource 3
 - Removing Detailed Maps 16
 - Removing MapSource 17
 - Renaming GPS Unit 33
 - Repairing MapSource 17
 - Right-Click Menus 35
 - Map feature menu 35
 - Route menu 38
 - Track menu 40
 - Waypoint menu 37
 - Routes 62
 - adding waypoints 64
 - auto-routes 27, 62
 - average driving speed, setting 27
 - avoiding roads 27
 - calculation style, changing 27
 - creating 62, 63, 65
 - deleting 68
 - direct routes 27, 62
 - duplicating 23
 - finding places and 63, 66
 - inserting waypoints 63, 66
 - inverting 68
 - linking files to 66, 68
 - moving waypoints 64, 66
 - recalculating 66
 - removing waypoints from 23, 65
 - renaming 66, 68
 - right-click menu 38
 - routes tab 63
 - route properties 65
 - route styles, changing 27
 - route tool 62
 - selecting 63, 64
 - showing waypoint on map 66
 - text directions 66, 68
 - vehicle type, choosing 27
 - Routes Properties Dialog Box
 - creating routes with 67
 - Route Properties Dialog Box 66
 - adding waypoints 67
 - inserting waypoints 66
 - moving waypoints 66
 - opening 65
 - viewing 23
 - Route Tool 32
 - creating routes with 63
- S**
- Saving MapSource Documents 22, 75
 - Secure Digital (SD) Card
 - card 2
 - receiving maps from 53
 - sending maps to 50
 - Selection Tool 32
 - Select All 23
 - Send To Device
 - CF or SD card reader 50
 - cf Que 51
 - iQue 51
 - serial GPS unit 49
 - USB Card Programmer 50
 - USB GPS unit 50
 - Serial Communications Port 1, 18
 - Serial Number i
 - Set PC Clock 33
 - Show Item on Map 30

Software License Agreement 79

Splitter Bar 19, 21
moving 21

Status Bar 20
showing/hiding 20, 31
where to find 19

Switching Products 31

T

Text Directions
printing 68
viewing 66, 68

Toolbars 19
Edit toolbar 23
File toolbar 22
Find toolbar 28
showing/hiding 31
Tools toolbar 32
Transfer toolbar 29
View menu 30

Tools Menu 32

Tracks 69
filtering 70, 72, 74
GPS tab 70
inverting 73
linking files to 73

naming 72
properties 72
recording 70, 71
right-click menu 40
tracks tab 69
track points 69
vertical track profile, showing 72
viewing 69, 71

Tracks Tab 69

Transferring Data 47
CF or SD card reader 48, 50, 53
cf Que 48, 51, 53
from GPS unit to MapSource 52
from MapSource to GPS unit 49
iQue 48, 51, 53
serial GPS unit 47, 49, 52
USB Card Programmer 47, 50, 52
USB GPS unit 47, 50, 52

Transfer Menu 29

U

Undo 23
Uninstalling MapSource 7
Units of Measure, Changing 25
altitude/elevation 25
area 25

depth 25
distance/speed 25
heading 25
temperature 25
Unit ID 33
Unlocking Maps 8, 33
for a second GPS unit 8
on the Garmin Web site 8
with Coupon Code 11
with Unlock Code 10
UnlockWizard 8–15
opening 9, 33
Unlock Certificate 8, 11
Unlock Code 8, 10
backing up 12
restoring 13
viewing 14
where to find 8, 10
USB Data Card Programmer 1, 47, 50, 52
USB Drivers 18
installing 18
USB GPS Unit
receiving data from 52
sending data to 50
USB port 1, 18
Utilities Menu 33

Index

V

Vehicle

choosing type of 27

Vertical Track Profile 72, 73

Viewing Recent MapSource Files 22

View Menu 30

W

Warnings and Cautions v, vi

BlueChart vi

Waypoints 54

categories 26, 56

creating 54

creating on a map feature 26

editing 56

finding 60

limiting characters in names 26

linking a file to 56

naming 55, 56

properties 23

right-click menu 37

showing on map 56

symbols 56

using waypoint tool 54

waypoint properties dialog box 55

Waypoint Properties Dialog Box 56

Waypoint Tool 32, 54

Z

Zooming

changing map scale 31

zoom in 30, 42

zoom in max 30

zoom out 30, 42

zoom out region 30

zoom scale 31, 42

zoom tool 42

Zoom Tool 32

**For the latest free software updates (excluding map data) throughout the life of your
Garmin products, visit the Garmin Web site at www.garmin.com.**



© Copyright 1999–2004 Garmin Ltd. or its subsidiaries

Garmin International, Inc.

1200 East 151st Street, Olathe, Kansas 66062, U.S.A.

Garmin (Europe) Ltd.

Unit 5, The Quadrangle, Abbey Park Industrial Estate, Romsey, SO51 9DL, U.K.

Garmin Corporation

No. 68, Jangshu 2nd Road, Shijr, Taipei County, Taiwan

www.garmin.com

Part Number 190-00417-00 Rev. B